

# Rabbit IgG Heavy and Light Chain Antibody

Sheep Polyclonal Conjugate DyLight® 488

Antigen Affinity Purified

Catalog No. A120-100D2

Lot No. A120-100D2-12

---

<b>APPLICATIONS</b>	IHC, ICC, Flow Cyt, IF
<b>SPECIES REACTIVITY</b>	Rabbit
<b>AMOUNT</b>	1 ml
<b>CONCENTRATION</b>	0.5 mg/ml
<b>STORAGE/SHELF LIFE</b>	2 – 8°C / 1 year from date of receipt
<b>PHYSICAL STATE</b>	Liquid
<b>BUFFER</b>	Phosphate Buffered Saline (PBS) containing 0.2% BSA and 0.09% Sodium Azide
<b>FLUOROPHORE/PROTEIN</b>	4.9
<b>ISOTYPE</b>	IgG
<b>ORIGIN</b>	USA
<b>PRODUCTION PROCEDURES</b>	The antibody was isolated by affinity chromatography using antigen coupled to agarose beads and conjugated to DyLight® 488.

Antibody concentration was determined by extinction coefficient prior to conjugation: absorbance at 280 nm of 1.4 equals 1.0 mg of IgG.

By immunoelectrophoresis and ELISA this antibody reacts specifically with rabbit IgG and with light chains common to other rabbit immunoglobulins. No antibody was detected against non-immunoglobulin serum proteins. This antibody may cross react with IgG from other species.

**APPLICATIONS** Centrifuge tube to remove product from lid. Optimal working dilutions should be determined experimentally by the investigator. Prepare working dilution immediately before use.

Immunohistochemistry 1:40 – 1:400

Immunocytochemistry 1:40 – 1:500

Flow Cytometry 1:50 – 1:200

Immunofluorescence 1:40 – 1:500

**APPLICATION NOTES** Not all listed applications have been specifically tested by our laboratory.

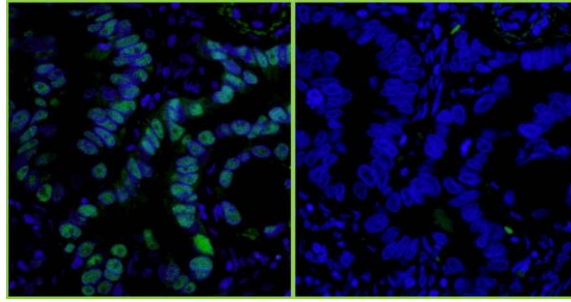
DyLight® 488 is excited at 493 (in PBS) and emits at 518 (in PBS).

DyLight® is a trademark of Thermo Fisher Scientific Inc. and its subsidiaries.

**ADDITIONAL INFO** <https://www.fortislife.com/p/A120-100D2>

Use the link above to view SDS, a current list of citations, and other product specific information.

This document certifies that this product has met all of the quality control standards defined by Bethyl Laboratories, Inc.  
Michael Spencer, PhD Date: November 22, 2022

**Detection of human PCNA by immunofluorescence.**

*Sample:* FFPE serial sections of human stomach carcinoma.

*Primary Antibody:* Affinity purified rabbit anti-PCNA (Cat. No. IHC-00012 Lot1) used at a dilution of 1:100 (left) and primary antibody omitted (right). *Secondary Antibody:*

Green-fluorescent sheep anti-rabbit IgG-heavy and light chain Antibody DyLight® 488 Conjugated (A120-100D2 Lot 5 used at a dilution of 1:50 (10µg/ml). *Counterstain:* DAPI (blue)