

Rabbit IgG Heavy and Light Chain Antibody

Goat Polyclonal Conjugate DyLight® 550

Antigen Affinity Purified

Catalog No. A120-101D3

Lot No. A120-101D3-11

| | |
|------------------------------|---|
| APPLICATIONS | IHC, ICC, F, IF |
| SPECIES REACTIVITY | Rabbit |
| AMOUNT | 1 ml |
| CONCENTRATION | 0.5 mg/ml |
| STORAGE/SHELF LIFE | 2 – 8° C / 1 year from date of receipt |
| PHYSICAL STATE | Liquid |
| BUFFER | Phosphate Buffered Saline (PBS) containing 0.2% BSA and 0.09% Sodium Azide |
| FLUOROPHORE/PROTEIN | 6.4 |
| ISOTYPE | IgG |
| ORIGIN | USA |
| PRODUCTION PROCEDURES | The antibody was isolated by affinity chromatography using antigen coupled to agarose beads and conjugated to DyLight® 550. |

Antibody concentration was determined by extinction coefficient prior to conjugation: absorbance at 280 nm of 1.4 equals 1.0 mg of IgG.

By immunoelectrophoresis and ELISA this antibody reacts specifically with rabbit IgG and with light chains common to other rabbit immunoglobulins. No antibody was detected against non-immunoglobulin serum proteins. This antibody may cross react with IgG from other species.

APPLICATIONS Centrifuge tube to remove product from lid. Optimal working dilutions should be determined experimentally by the investigator. Prepare working dilution immediately before use.

Immunohistochemistry 1:50 – 1:500

Immunocytochemistry 1:50 – 1:500

Flow Cytometry 1:50 – 1:200

Immunofluorescence 1:50 – 1:500

APPLICATION NOTES Not all listed applications have been specifically tested by our laboratory.

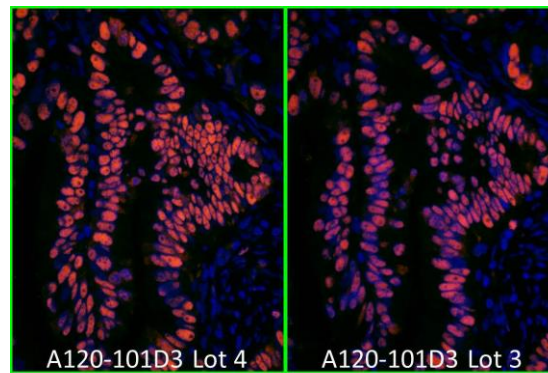
DyLight® 550 is excited at 562 (in PBS) and emits at 576 (in PBS). DyLight® 550 replaces DyLight® 549.

DyLight® is a trademark of Thermo Fisher Scientific Inc. and its subsidiaries.

ADDITIONAL INFO <https://www.bethyl.com/product/A120-101D3>

Use the link above to view SDS, a current list of citations, and other product specific information.

This document certifies that this product has met all of the quality control standards defined by Bethyl Laboratories, Inc.
Michael Spencer, PhD Date: October 12, 2021

**Detection of human PCNA by immunofluorescence.**

Sample: FFPE section of human stomach carcinoma.

Primary Antibody: Affinity purified rabbit anti-PCNA (Cat. No. IHC-00012 Lot1) used at a dilution of 1:100.

Secondary Antibody: Red-fluorescent goat anti-rabbit IgG-heavy and light chain Antibody DyLight® 550 Conjugated (A120-101D3 Lot 4) used at a dilution of 1:100 (5µg/ml).

Counterstain: DAPI (blue)