

Rabbit IgG Heavy and Light Chain Antibody

Goat Polyclonal

Conjugate HRP

Antigen Affinity Purified

Catalog No. A120-101P

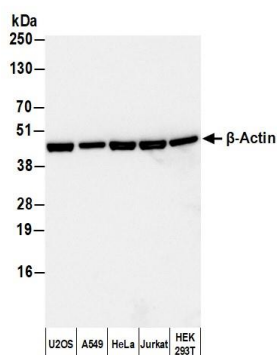
Lot No. 46

APPLICATIONS	WB, IHC, ICC, ELISA								
SPECIES REACTIVITY	Rabbit								
AMOUNT	1 ml								
CONCENTRATION	1 mg/ml								
STORAGE/SHELF LIFE	2 – 8°C / 1 year from date of receipt								
PHYSICAL STATE	Liquid								
BUFFER	Phosphate Buffered Saline (PBS) containing 0.2% BSA and 0.05% Pro-Clean 400								
ISOTYPE	IgG								
ORIGIN	USA								
PRODUCTION PROCEDURES	<p>The antibody was isolated by affinity chromatography using antigen coupled to agarose beads and conjugated to horseradish peroxidase (HRP).</p> <p>Prior to conjugation, immunoglobulin concentration was determined using Beer’s Law where 1 mg/mL IgG has an A280 of 1.4. Molar enzyme/antibody protein ratio is 4:1.</p> <p>By immunoelectrophoresis and ELISA this antibody reacts specifically with rabbit IgG and with light chains common to other rabbit immunoglobulins. No antibody was detected against non-immunoglobulin serum proteins. This antibody may cross react with IgG from other species.</p>								
APPLICATIONS	<p>Centrifuge tube to remove product from lid. Optimal working dilutions should be determined experimentally by the investigator. Prepare working dilution immediately before use.</p> <table><tr><td>Western Blot</td><td>1:5000 – 1:50,000</td></tr><tr><td>Immunohistochemistry</td><td>1:200 – 1:5000</td></tr><tr><td>Immunocytochemistry</td><td>1:200 – 1:5000</td></tr><tr><td>ELISA</td><td>1:10,000 – 1:100,000</td></tr></table>	Western Blot	1:5000 – 1:50,000	Immunohistochemistry	1:200 – 1:5000	Immunocytochemistry	1:200 – 1:5000	ELISA	1:10,000 – 1:100,000
Western Blot	1:5000 – 1:50,000								
Immunohistochemistry	1:200 – 1:5000								
Immunocytochemistry	1:200 – 1:5000								
ELISA	1:10,000 – 1:100,000								
APPLICATION NOTES	Not all listed applications have been specifically tested by our laboratory.								
ADDITIONAL INFO	<p>https://www.fortislife.com/p/A120-101P</p> <p>Use the link above to view SDS, a current list of citations, and other product specific information.</p>								

This document certifies that this product has met all of the quality control standards defined by Bethyl Laboratories, Inc.

Michael Spencer, PhD

Date: February 6, 2024



Detection of human β -Actin by western blot with HRP-conjugated Goat anti-Rabbit IgG Heavy and Light Chain Antibody. *Samples:* Whole cell lysate (50 μ g) from U2OS, A549, HeLa, Jurkat, and HEK293T cells prepared using NETN lysis buffer. *Antibody:* Affinity Purified Rabbit anti- β -Actin Antibody (A300-491A) used for WB at 0.04 μ g/ml. *Secondary:* HRP-conjugated Goat anti-Rabbit IgG Heavy and Light Chain Antibody (A120-101P). *Detection:* Chemiluminescence with an exposure time of 1 second.