

Rabbit IgG–Fc Fragment Antibody

Goat Polyclonal Conjugate Biotin

Antigen Affinity Purified

Catalog No. A120-111B

Lot No. 16

APPLICATIONS	WB, IHC, ICC, ELISA
SPECIES REACTIVITY	Rabbit
AMOUNT	1 ml
CONCENTRATION	1 mg/ml
STORAGE/SHELF LIFE	2 – 8°C / 1 year from date of receipt
PHYSICAL STATE	Liquid
BUFFER	Phosphate Buffered Saline (PBS) containing 0.2% BSA and 0.09% Sodium Azide
ISOTYPE	IgG
ORIGIN	USA
PRODUCTION PROCEDURES	Antiserum was solid phase adsorbed to ensure class specificity. The antibody was isolated by affinity chromatography using antigen coupled to agarose beads and conjugated to biotin.

Prior to conjugation, immunoglobulin concentration was determined using Beer's Law where 1mg/mL IgG has an A280 of 1.4.

By immunoelectrophoresis, this antibody reacts specifically with rabbit IgG. This antibody may cross react with IgG from other species.

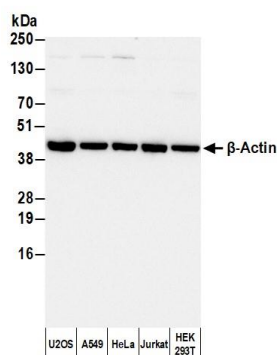
APPLICATIONS Centrifuge tube to remove product from lid. Optimal working dilutions should be determined experimentally by the investigator. Prepare working dilution immediately before use.

Western Blot	1:20,000 – 1:400,000
Immunohistochemistry	1:500 – 1:5000
Immunocytochemistry	1:200 – 1:1000
ELISA	1:20,000 – 1:400,000

APPLICATION NOTES Not all listed applications have been specifically tested by our laboratory.

ADDITIONAL INFO <https://www.fortislife.com/p/A120-111B>
Use the link above to view SDS, a current list of citations, and other product specific information.

This document certifies that this product has met all of the quality control standards defined by Bethyl Laboratories, Inc.
Michael Spencer, PhD Date: February 6, 2024



Detection of human β -Actin by western blot with Biotinylated Goat anti-Rabbit IgG-Fc Fragment Antibody.

Samples: Whole cell lysate (50 μ g) from U2OS, A549, HeLa, Jurkat, and HEK293T cells prepared using NETN lysis buffer. *Antibody:* Affinity Purified Rabbit anti- β -Actin Antibody (A300-491A) used for WB at 0.04 μ g/ml. *Secondary:* Biotinylated Goat anti-Rabbit IgG-Fc Fragment Antibody (A120-111B). *Tertiary:* HRP-conjugated Rabbit anti-Biotin Antibody (A150-109P). *Detection:* Chemiluminescence with an exposure time of 1 second.