

Rabbit IgG–Fc Fragment Cross–Adsorbed Antibody

Goat Polyclonal Conjugate DyLight® 488
Antigen Affinity Purified
Catalog No. A120–211D2
Lot No. 5

APPLICATIONS	IHC, ICC, Flow Cyt, IF
SPECIES REACTIVITY	Rabbit. Minimum reactivity to human, mouse and rat
AMOUNT	1 ml
CONCENTRATION	0.5 mg/ml
STORAGE/SHELF LIFE	2 – 8°C / 1 year from date of receipt
PHYSICAL STATE	Liquid
BUFFER	Phosphate Buffered Saline (PBS) containing 0.2% BSA and 0.09% Sodium Azide
FLUOROPHORE/PROTEIN	5.7
ISOTYPE	IgG
ORIGIN	USA
PRODUCTION PROCEDURES	Antiserum was solid phase adsorbed to ensure class specificity. Antiserum was cross adsorbed using human, mouse and rat immunosorbents to remove cross reactive antibodies. The antibody to rabbit IgG was isolated by affinity chromatography using antigen coupled to agarose beads and conjugated to DyLight® 488.

Immunoglobulin concentration was determined using Beer's Law where 1 mg/mL IgG has an A280 of 1.4.

By ELISA, this antibody reacts specifically with rabbit IgG. No antibody was detected against non-immunoglobulin serum proteins. Less than 1% cross reactivity to human, mouse and rat IgG was detected. This antibody may cross react with IgG from other species.

APPLICATIONS Centrifuge tube to remove product from lid. Optimal working dilutions should be determined experimentally by the investigator. Prepare working dilution immediately before use.

Immunohistochemistry	1:40 – 1:400
Immunocytochemistry	1:40 – 1:400
Flow Cytometry	1:50 – 1:200
Immunofluorescence	1:40 – 1:400

APPLICATION NOTES Not all listed applications have been specifically tested by our laboratory.

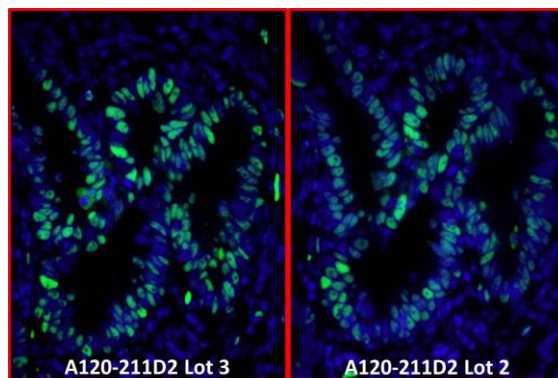
DyLight® 488 is excited at 493 (in PBS) and emits at 518 (in PBS).

DyLight® is a trademark of Thermo Fisher Scientific Inc. and its subsidiaries.

ADDITIONAL INFO <https://www.fortislife.com/p/A120-211D2>

Use the link above to view SDS, a current list of citations, and other product specific information.

This document certifies that this product has met all of the quality control standards defined by Bethyl Laboratories, Inc.
Michael Spencer, PhD Date: February 21, 2024

**Detection of human PCNA by immunofluorescence.**

Samples: FFPE serial sections of human breast carcinoma.

Primary Antibody: Affinity purified rabbit anti-PCNA (Cat. No. IHC-00012 Lot1) used at a dilution of 1:100.

Secondary Antibody: Green-fluorescent goat anti-rabbit IgG-Fc Fragment cross-adsorbed Antibody DyLight® 488 Conjugated (A120-211D2 Lot 3) used at a dilution of 1:50 (10µg/ml). *Counterstain:* DAPI (blue)