

Rabbit IgG-heavy and light chain cross-adsorbed Antibody

F(ab')₂ Donkey Polyclonal Conjugate DyLight® 488

Antigen Affinity Purified

Catalog No. A120-216D2

Lot No. A120-216D2-8



APPLICATIONS	IHC, ICC, F, IF
SPECIES REACTIVITY	Rabbit. Minimum reactivity to bovine, chicken, goat, human, mouse, rat and sheep
ISOTYPE	IgG
AMOUNT	1 ml at 0.5 mg/ml
STORAGE/SHELF LIFE	2 - 8° C / 1 year from date of receipt
PHYSICAL STATE	Liquid
FLUOROPHORE/PROTEIN	6
BUFFER	Phosphate Buffered Saline (PBS) containing 0.2% BSA and 0.09% Sodium Azide
ORIGIN	USA
PRODUCTION PROCEDURES	Antiserum was cross adsorbed using bovine, chicken, goat, human, mouse, rat and sheep immunosorbents to remove cross reactive antibodies. The antibody to rabbit IgG was isolated by affinity chromatography using antigen coupled to agarose beads. F(ab') ₂ fragments were generated using a pepsin digestion. Fc fragments and whole IgG molecules have been removed. Fragments were conjugated to DyLight® 488.

Antibody concentration was determined by extinction coefficient: absorbance at 280 nm of 1.4 equals 1.0 mg of IgG.

By immunoelectrophoresis and ELISA this antibody reacts specifically with rabbit IgG and with light chains common to other rabbit immunoglobulins. No antibody was detected against non-immunoglobulin serum proteins. Less than 1% cross reactivity to bovine, chicken, goat, human, mouse, rat and sheep IgG was detected. This antibody may cross react with IgG from other species.

APPLICATIONS Centrifuge tube to remove product from lid. Optimal working dilutions should be determined experimentally by the investigator. Prepare working dilution immediately before use.

Immunohistochemistry 1:50 - 1:500

Immunocytochemistry 1:50 - 1:500

Flow Cytometry 1:50 - 1:200

Immunofluorescence 1:50 - 1:500

APPLICATION NOTES Not all listed applications have been specifically tested by our laboratory.

DyLight® 488 is excited at 493 (in PBS) and emits at 518 (in PBS).

DyLight® is a trademark of Thermo Fisher Scientific Inc. and its subsidiaries.

ADDITIONAL INFO <https://www.bethyl.com/product/A120-216D2>
Use the link above to view SDS, a current list of citations, and other product specific information.

This document certifies that this product has met all of the quality control standards defined by Bethyl Laboratories, Inc.

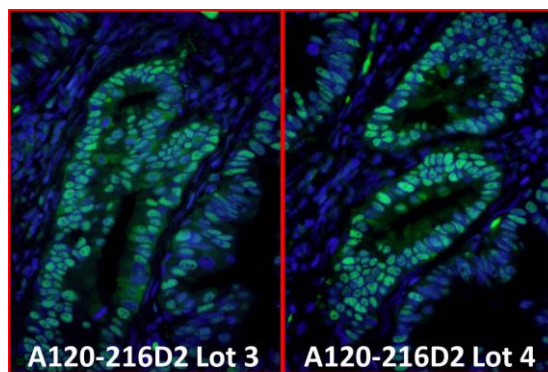
Eric McIntush, PhD | Chief Scientific Officer

Date: December 3, 2018

Bethyl Laboratories, Inc. • 25043 West FM 1097 • Montgomery, TX 77356 •
800.338.9579 • 936.597.6111 • 866.597.6105 (FAX) • www.bethyl.com • technical@bethyl.com

1

For in vitro laboratory use only. Not for any clinical, therapeutic or diagnostic use in humans or animals. Not for human or animal consumption. This product may not be resold or modified for resale without the prior written approval of Bethyl Laboratories, Inc. The information provided in this data sheet is believed to be correct but does not purport to be all-inclusive and is intended to be used as a guide. Bethyl Laboratories, Inc. shall not be liable or responsible in any way for use of either this information or the material supplied. Disposal of hazardous material may be subject to federal, state or local laws or regulations.

**Detection of human PCNA by immunofluorescence.**

Samples: FFPE sections of human stomach carcinoma.

Primary Antibody: Affinity purified rabbit anti-PCNA (Cat.

No. IHC-00012 Lot1) used at a dilution of 1:100. *Secondary*

Antibody: Green-fluorescent F(ab')₂ donkey anti-rabbit IgG-heavy and light chain cross-adsorbed Antibody

DyLight® 488 Conjugated A120-216D2 Lot 3 (left) and A120-216D2 Lot 4 (right) used at a dilution of 1:100 (5 µg/ml). *Counterstain:* DAPI (blue)