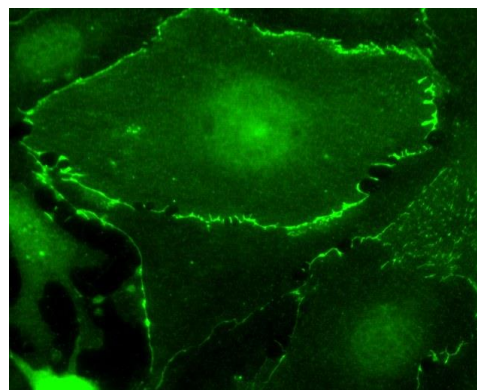
**Detection of c-myc-tagged Protein by western blot.**

Samples: 200, 100, or 50 ng of E. coli whole cell lysate expressing a multi-tag fusion protein. *Antibody:* Affinity purified rabbit anti-Myc Tag antibody A190-105A used for WB at 0.04 µg/ml (1:25,000). *Detection:* Chemiluminescence with an exposure time of 3 seconds.

**Detection of c-myc Tagged Plakoglobin by immunofluorescence.**

Samples: Human microvascular endothelial cells expressing c-myc tagged plakoglobin following transient transfection. *Antibody:* Affinity purified rabbit anti-Myc Tag (Cat. No. A190-105A) used at 1 µg/ml. *Detection:* FITC labeled goat anti-rabbit IgG (h+l).