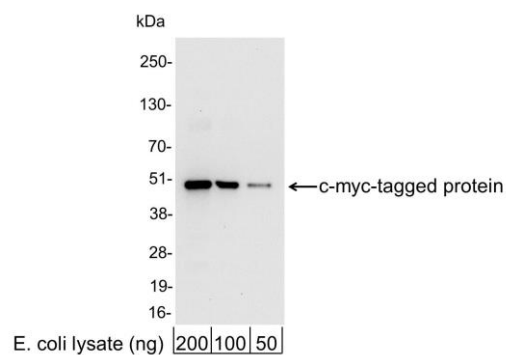


Myc Tag Antibody

Rabbit Polyclonal		Conjugate	HRP
Antigen Affinity Purified			
Catalog No.	A190-105P	Uniprot ID	P01106
Lot No.	A190-105P-21	GeneID	4609

APPLICATIONS	WB, IHC, ICC, ELISA								
AMOUNT	0.1 ml								
CONCENTRATION	1 mg/ml								
STORAGE/SHELF LIFE	2 - 8°C / 1 year from date of receipt								
PHYSICAL STATE	Liquid								
BUFFER	Phosphate Buffered Saline (PBS) containing 0.2% BSA and 0.05% Pro-Clean 400								
ISOTYPE	IgG								
ORIGIN	USA								
PRODUCTION PROCEDURES	<p>Rabbits were immunized with a synthetic peptide representing amino acid residues 410-419 (EQKLISEEDL) of human myc conjugated to KLH. Antibody was isolated by affinity chromatography using the peptide immobilized on solid support and conjugated to horseradish peroxidase (HRP).</p> <p>Antibody concentration was determined by extinction coefficient prior to conjugation: absorbance at 280 nm of 1.4 equals 1.0 mg of IgG. Molar enzyme/antibody protein ratio is 4:1.</p>								
APPLICATIONS	<p>Centrifuge tube to remove product from lid. Optimal working dilutions should be determined experimentally by the investigator. Prepare working dilution immediately before use.</p> <table><tr><td>Western Blot</td><td>1:1,000 - 1:30,000</td></tr><tr><td>Immunohistochemistry</td><td>Not applicable</td></tr><tr><td>Immunocytochemistry</td><td>1:200 - 1:500</td></tr><tr><td>ELISA</td><td>1:10,000 - 1:100,000</td></tr></table>	Western Blot	1:1,000 - 1:30,000	Immunohistochemistry	Not applicable	Immunocytochemistry	1:200 - 1:500	ELISA	1:10,000 - 1:100,000
Western Blot	1:1,000 - 1:30,000								
Immunohistochemistry	Not applicable								
Immunocytochemistry	1:200 - 1:500								
ELISA	1:10,000 - 1:100,000								
APPLICATION NOTES	Not all listed applications have been specifically tested by our laboratory.								
ADDITIONAL INFO	<p>Validation by Western Blot was performed using a Western Blot Gel 4-20%. https://www.fortislife.com/p/A190-105P Use the link above to view SDS, a current list of citations, and other product specific information.</p>								

This document certifies that this product has met all of the quality control standards defined by Bethyl Laboratories, Inc.
Michael Spencer, PhD Date: March 3, 2023

**Detection of c-myc-tagged Protein by western blot.**

Samples: 200, 100, or 50 ng of E. coli whole cell lysate expressing a multi-tag fusion protein. *Antibodies:* Affinity-purified, HRP-conjugated, rabbit anti-Myc Tag antibody A190-105P used for WB at 0.04 µg/ml (1:25,000).

Detection: Chemiluminescence with an exposure time of 10 seconds.