

# 6-His Tag Antibody

Rabbit Polyclonal

Antigen Affinity Purified

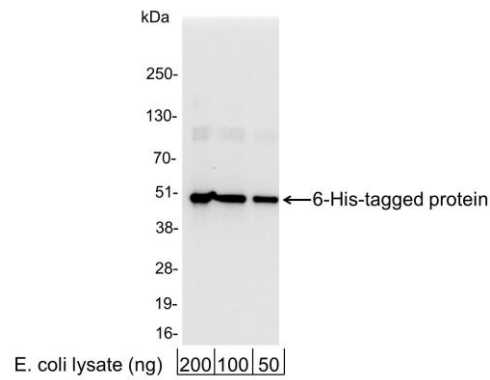
Catalog No. A190-114A

Lot No. A190-114A-11



<b>APPLICATIONS</b>	WB, IP, ICC, ELISA								
<b>AMOUNT</b>	0.1 ml								
<b>CONCENTRATION</b>	1 mg/ml								
<b>STORAGE/SHELF LIFE</b>	2 – 8° C / 1 year from date of receipt								
<b>PHYSICAL STATE</b>	Liquid								
<b>BUFFER</b>	Phosphate Buffered Saline (PBS) containing 0.09% Sodium Azide								
<b>ISOTYPE</b>	IgG								
<b>ORIGIN</b>	USA								
<b>PRODUCTION PROCEDURES</b>	<p>Rabbits were immunized with 6-His (HHHHHH) conjugated to KLH. Antibody was isolated by affinity chromatography using the peptide immobilized on solid support. This antibody does not detect all N-terminal 6-His tagged proteins.</p> <p>Antibody concentration was determined by extinction coefficient: absorbance at 280 nm of 1.4 equals 1.0 mg of IgG.</p>								
<b>APPLICATIONS</b>	<p>Centrifuge tube to remove product from lid. Optimal working dilutions should be determined experimentally by the investigator. Prepare working dilution immediately before use.</p> <table><tr><td>Western Blot</td><td>1:1,000 – 1:30,000</td></tr><tr><td>Immunoprecipitation</td><td>1 – 4 µg/mg lysate</td></tr><tr><td>Immunocytochemistry</td><td>1:100 – 1:400</td></tr><tr><td>ELISA</td><td>1:1,000 – 1:30,000; for coating plates 1:100 – 1:500</td></tr></table>	Western Blot	1:1,000 – 1:30,000	Immunoprecipitation	1 – 4 µg/mg lysate	Immunocytochemistry	1:100 – 1:400	ELISA	1:1,000 – 1:30,000; for coating plates 1:100 – 1:500
Western Blot	1:1,000 – 1:30,000								
Immunoprecipitation	1 – 4 µg/mg lysate								
Immunocytochemistry	1:100 – 1:400								
ELISA	1:1,000 – 1:30,000; for coating plates 1:100 – 1:500								
<b>APPLICATION NOTES</b>	<p>Not all listed applications have been specifically tested by our laboratory.</p> <p>Validation by Western Blot was performed using a Western Blot Gel 4–20%.</p>								
<b>ADDITIONAL INFO</b>	<p><a href="https://www.bethyl.com/product/A190-114A">https://www.bethyl.com/product/A190-114A</a></p> <p>Use the link above to view SDS, a current list of citations, and other product specific information.</p>								

This document certifies that this product has met all of the quality control standards defined by Bethyl Laboratories, Inc.  
Eric McIntush, PhD | Chief Scientific Officer Date: February 19, 2020

**Detection of 6-His-tagged Protein by western blot.**

*Samples:* 200, 100, or 50 ng of E. coli whole cell lysate expressing a multi-tag fusion protein. *Antibodies:* Affinity purified, rabbit anti-6-His antibody A190-114A used for WB at 0.04 µg/ml (1:25,000). *Detection:* Chemiluminescence with an exposure time of 3 seconds.