

6-His Tag Antibody

Rabbit Polyclonal Conjugate Biotin

Antigen Affinity Purified

Catalog No. A190-114B

Lot No. A190-114B-9

APPLICATIONS WB, ELISA

AMOUNT 0.1 ml

CONCENTRATION 1 mg/ml

STORAGE/SHELF LIFE 2 - 8°C / 1 year from date of receipt

PHYSICAL STATE Liquid

BUFFER Phosphate Buffered Saline (PBS) containing 0.2% BSA and 0.09% Sodium Azide

ISOTYPE IgG

ORIGIN USA

PRODUCTION PROCEDURES Rabbits were immunized with 6-His (HHHHHH) conjugated to KLH. Antibody was isolated by affinity chromatography using the peptide immobilized on solid support and conjugated to biotin. This antibody does not detect all N-terminal 6-His tagged proteins.

Antibody concentration was determined by extinction coefficient prior to conjugation: absorbance at 280 nm of 1.4 equals 1.0 mg of IgG.

APPLICATIONS Centrifuge tube to remove product from lid. Optimal working dilutions should be determined experimentally by the investigator. Prepare working dilution immediately before use.

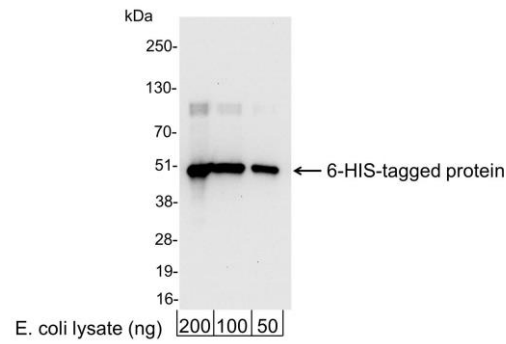
Western Blot 1:10,000 - 1:100,000

ELISA 1:10,000 - 1:100,000

APPLICATION NOTES Validation by Western Blot was performed using a Western Blot Gel 4-20%.

ADDITIONAL INFO <https://www.fortislife.com/p/A190-114B>
Use the link above to view SDS, a current list of citations, and other product specific information.

This document certifies that this product has met all of the quality control standards defined by Bethyl Laboratories, Inc.
Michael Spencer, PhD Date: October 13, 2022

**Detection of 6-His-tagged Protein by western blot.**

Samples: 200, 100, or 50 ng of E. coli whole cell lysate expressing a multi-tag fusion protein. *Antibodies:* Affinity-purified, biotin-conjugated, rabbit anti-6-His antibody A190-114B used for WB at 0.04 $\mu\text{g}/\text{ml}$ (1:25,000).

Detection: Streptavidin-HRP (0.1 $\mu\text{g}/\text{ml}$) and chemiluminescence with an exposure time of 10 seconds.