

GST Antibody

Rabbit Polyclonal

Antigen Affinity Purified

Catalog No. A190-122A

Lot No. A190-122A-10



APPLICATIONS	WB, IP, ICC, ELISA
ISOTYPE	IgG
AMOUNT	0.1 ml at 1 mg/ml
STORAGE/SHELF LIFE	2 - 8° C / 1 year from date of receipt
PHYSICAL STATE	Liquid
BUFFER	Phosphate Buffered Saline (PBS) containing 0.09% Sodium Azide
ORIGIN	USA
PRODUCTION PROCEDURES	Rabbits were immunized with Glutathione-S-Transferase (GST) from <i>Schistosoma japonicum</i> . Antibody was isolated by affinity chromatography using GST immobilized on solid support.

Antibody concentration was determined by extinction coefficient: absorbance at 280 nm of 1.4 equals 1.0 mg of IgG.

APPLICATIONS Centrifuge tube to remove product from lid. Optimal working dilutions should be determined experimentally by the investigator. Prepare working dilution immediately before use.

Western Blot	1:1,000 - 1:30,000
Immunoprecipitation	1 - 4 µg/mg lysate
Immunocytochemistry	1:100 - 1:400
ELISA	1:1,000 - 1:30,000; for coating plates 1:100 - 1:500

APPLICATION NOTES Not all listed applications have been specifically tested by our laboratory.

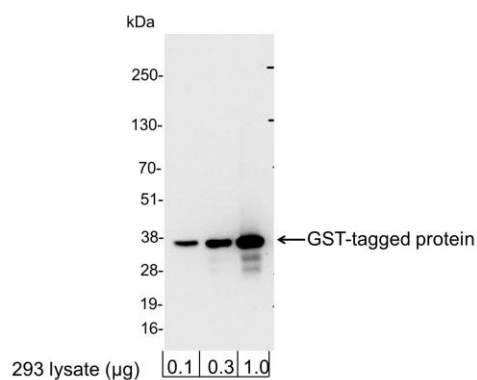
Validation by Western Blot was performed using a Western Blot Gel 4-20%.

ADDITIONAL INFO <https://www.bethyl.com/product/A190-122A>
Use the link above to view SDS, a current list of citations, and other product specific information.

This document certifies that this product has met all of the quality control standards defined by Bethyl Laboratories, Inc.

Eric McIntush, PhD | Chief Scientific Officer

Date: December 3, 2018



Detection of GST-tagged Protein by western blot. *Samples:* 0.1, 0.3, or 1.0 µg of 293 cell lysate expressing a GST-tag fusion protein. *Antibodies:* Affinity purified, rabbit anti-GST antibody A190-122A used for WB at 0.06 µg/ml (1:15,000). *Detection:* Chemiluminescence with an exposure time of 3 seconds.