

AU1 Tag Antibody

Rabbit Polyclonal

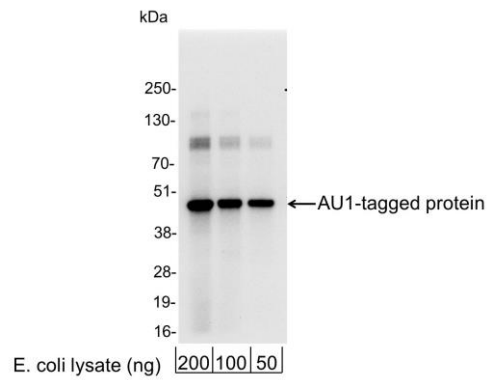
Antigen Affinity Purified

Catalog No. A190-125A

Lot No. A190-125A-230119

APPLICATIONS	WB, IP, ICC, ELISA
AMOUNT	0.1 ml
CONCENTRATION	1 mg/ml
STORAGE/SHELF LIFE	2 – 8°C / 1 year from date of receipt
PHYSICAL STATE	Liquid
BUFFER	Phosphate Buffered Saline (PBS) containing 0.09% Sodium Azide
ISOTYPE	IgG
ORIGIN	USA
PRODUCTION PROCEDURES	Rabbits were immunized with AU1 (DTYRYI) conjugated to KLH. Antibody was isolated by affinity chromatography using the peptide immobilized on solid support. Antibody concentration was determined by extinction coefficient: absorbance at 280 nm of 1.4 equals 1.0 mg of IgG.
APPLICATIONS	Centrifuge tube to remove product from lid. Optimal working dilutions should be determined experimentally by the investigator. Prepare working dilution immediately before use. Western Blot 1:1,000 – 1:30,000 Immunoprecipitation 1 – 4 µg/mg lysate Immunocytochemistry 1:100 – 1:400 ELISA 1:1,000 – 1:30,000; for coating plates 1:100 – 1:500
APPLICATION NOTES	Not all listed applications have been specifically tested by our laboratory.
ADDITIONAL INFO	Validation by Western Blot was performed using a Western Blot Gel 4–20%. https://www.fortislife.com/p/A190-125A Use the link above to view SDS, a current list of citations, and other product specific information.

This document certifies that this product has met all of the quality control standards defined by Bethyl Laboratories, Inc.
Michael Spencer, PhD Date: January 23, 2023

**Detection of AU1-tagged Protein by western blot.**

Samples: 200, 100, or 50 ng of E. coli whole cell lysate expressing a multi-tag fusion protein. *Antibodies:* Affinity purified, rabbit anti-AU1 antibody A190-125A used for WB at 0.04 µg/ml (1:25,000). *Detection:* Chemiluminescence with an exposure time of 3 seconds.