

SMC2 Antibody

Rabbit Polyclonal

Antigen Affinity Purified

Catalog No. A300-057A

Lot No. A300-057A-1

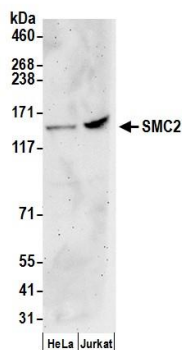
Protein ID NP_006435.1

GeneID 10592

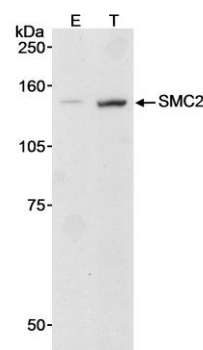


APPLICATIONS	WB
SPECIES REACTIVITY	Human
PRESUMED REACTIVITY	Based on 100% sequence identity, this antibody is predicted to react with Mouse
AMOUNT	100 µl
CONCENTRATION	1000 µg/ml
STORAGE/SHELF LIFE	2 – 8° C / 1 year from date of receipt
PHYSICAL STATE	Liquid
BUFFER	Tris-citrate/phosphate buffer, pH 7 to 8 containing 0.09% Sodium Azide
ISOTYPE	IgG
ORIGIN	USA
PRODUCTION PROCEDURES	<p>Antibody was affinity purified using an epitope specific to SMC2 immobilized on solid support.</p> <p>The epitope recognized by A300-057A maps to a region between residues 950 and 1000 of human Structural Maintenance of Chromosomes 2 using the numbering given in entry NP_006435.1 (GeneID 10592).</p> <p>Immunoglobulin concentration was determined by extinction coefficient: absorbance at 280 nm of 1.4 equals 1.0 mg of IgG.</p>
APPLICATIONS	<p>Centrifuge tube to remove product from lid. Optimal working dilutions should be determined experimentally by the investigator. Prepare working dilution immediately before use.</p> <p>Western Blot 1:1,000 – 1:10,000</p>
APPLICATION NOTES	Western blot of lysates performed using standard western blot reagents and 4–8% SDS-PAGE.
ADDITIONAL INFO	<p>https://www.bethyl.com/product/A300-057A</p> <p>Use the link above to view SDS, a current list of citations, and other product specific information.</p>

This document certifies that this product has met all of the quality control standards defined by Bethyl Laboratories, Inc.
Eric McIntush, PhD | Chief Scientific Officer Date: June 24, 2019



Detection of human SMC2 by western blot. *Samples:* Whole cell lysate (50 μ g) from HeLa and Jurkat cells prepared using NETN lysis buffer. ***Antibodies:*** Affinity purified rabbit anti-SMC2 antibody A300-057A (lot A300-057A-1) used for WB at 0.1 μ g/ml. ***Detection:*** Chemiluminescence with an exposure time of 3 minutes.



Detection of human SMC2 by western blot. *Samples:* Whole cell lysate (90 μ g) from mock transfected (E) or SMC2 transfected (T) HEKHEK293T cells. ***Antibody:*** Affinity purified rabbit anti-SMC2 A300-057A used at 0.1 μ g/ml. ***Detection:*** Chemiluminescence with a 10 minute exposure.