

SMC2 Antibody

Rabbit Polyclonal

Antigen Affinity Purified Protein ID NP_006435.1

Catalog No. A300-058A-T GenelD 10592

Lot No. A300-058A-T-3

APPLICATIONS	WB, IP, ICC
SPECIES REACTIVITY	Human
AMOUNT	10 µl
CONCENTRATION	1000 µg/ml
STORAGE/SHELF LIFE	2 – 8°C / 1 year from date of receipt
PHYSICAL STATE	Liquid
BUFFER	Tris-citrate/phosphate buffer, pH 7 to 8 containing 0.09% Sodium Azide
ISOTYPE	IgG
ORIGIN	USA
PRODUCTION PROCEDURES	Antibody was affinity purified using an epitope specific to SMC2 immobilized on solid support.

The epitope recognized by A300-058A-T maps to a region between residue 1150 and the C-terminus (residue 1197) of human Structural Maintenance of Chromosomes 2 using the numbering given in entry NP_006435.1 (GenelD 10592).

Immunoglobulin concentration was determined by extinction coefficient: absorbance at 280 nm of 1.4 equals 1.0 mg of IgG.

APPLICATIONS Centrifuge tube to remove product from lid. Optimal working dilutions should be determined experimentally by the investigator. Prepare working dilution immediately before use.

Western Blot 1:2,000 – 1:10,000

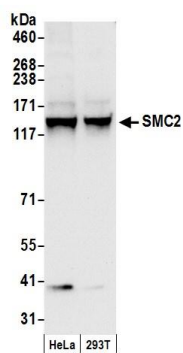
Immunoprecipitation 2 – 10 µg/mg lysate

Immunocytochemistry 1:200 – 1:400

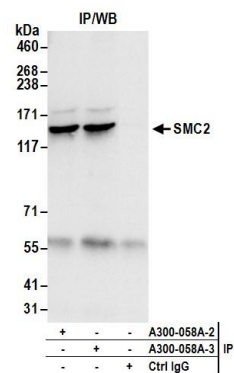
ADDITIONAL INFO <https://www.bethyl.com/product/A300-058A-T>

Use the link above to view SDS, a current list of citations, and other product specific information. IP-western blot protocol: https://www.bethyl.com/content/protocol_IP_WB

This document certifies that this product has met all of the quality control standards defined by Bethyl Laboratories, Inc.
Michael Spencer, PhD Date: June 6, 2022



Detection of human SMC2 by western blot. *Samples:* Whole cell lysate (50 μ g) from HeLa and HEK293T cells prepared using NETN lysis buffer. *Antibody:* Affinity purified rabbit anti-SMC2 antibody A300-058A (lot A300-058A-3) used for WB at 0.1 μ g/ml. *Detection:* Chemiluminescence with an exposure time of 3 seconds.



Detection of human SMC2 by western blot of immunoprecipitates. *Samples:* Whole cell lysate (0.5 or 1.0 mg per IP reaction; 20% of IP loaded) from HeLa cells prepared using NETN lysis buffer. *Antibodies:* Affinity purified rabbit anti-SMC2 antibody A300-058A (lot A300-058A-3) used for IP at 6 μ g per reaction. SMC2 was also immunoprecipitated by a previous lot of this antibody A300-058A-2. For blotting immunoprecipitated SMC2, A300-058A was used at 1 μ g/ml. *Detection:* Chemiluminescence with an exposure time of 3 seconds.