

CDC25a Antibody

Rabbit Polyclonal

Antigen Affinity Purified

Protein ID NP_001780.2

Catalog No. A300-075A

GeneID 993

Lot No. A300-075A-2



APPLICATIONS	WB, IP
SPECIES REACTIVITY	Human
AMOUNT	100 µl
CONCENTRATION	1000 µg/ml
STORAGE/SHELF LIFE	2 - 8° C / 1 year from date of receipt
PHYSICAL STATE	Liquid
BUFFER	Tris-citrate/phosphate buffer, pH 7 to 8 containing 0.09% Sodium Azide
ISOTYPE	IgG
ORIGIN	USA
PRODUCTION PROCEDURES	Antibody was affinity purified using an epitope specific to CDC25a immobilized on solid support.

The epitope recognized by A300-075A maps to a region between residues 175 and 225 of human Cell Division Cycle 25A using the numbering given in entry NP_001780.2 (GeneID 993).

Immunoglobulin concentration was determined by extinction coefficient: absorbance at 280 nm of 1.4 equals 1.0 mg of IgG.

APPLICATIONS Centrifuge tube to remove product from lid. Optimal working dilutions should be determined experimentally by the investigator. Prepare working dilution immediately before use.

Western Blot 1:500 - 1:2,500

Immunoprecipitation 2 - 10 µg/mg lysate

APPLICATION NOTES Western blot of immunoprecipitates performed using Normal Pig Serum (Cat. No. S100-020), Goat anti-Rabbit Light Chain HRP Conjugate (Cat. No. A120-113P) and 4-20% SDS-PAGE (link to IP-western blot protocol in Additional Info section below).

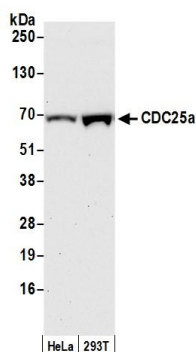
Western blot of lysates performed using standard western blot reagents and 4-20% SDS-PAGE.

ADDITIONAL INFO <https://www.bethyl.com/product/A300-075A>

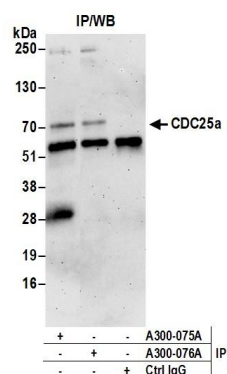
Use the link above to view SDS, a current list of citations, and other product specific information.

IP-western blot protocol: https://www.bethyl.com/content/protocol_IP_WB

This document certifies that this product has met all of the quality control standards defined by Bethyl Laboratories, Inc.
Eric McIntush, PhD | Chief Scientific Officer Date: June 21, 2019



Detection of human CDC25a by western blot. *Samples:* Nuclear extract (50 µg) from HeLa and HEK293T cells. *Antibody:* Affinity purified rabbit anti-CDC25a antibody A300-075A (lot A300-075A-2) used for WB at 1 µg/ml. *Detection:* Chemiluminescence with an exposure time of 3 minutes.



Detection of human CDC25a by western blot of immunoprecipitates. *Samples:* Nuclear Extract (0.5 or 1.0 mg per IP reaction; 20% of IP loaded) from HEK293T cells. *Antibodies:* Affinity purified rabbit anti-CDC25a antibody A300-075A (lot A300-075A-2) used for IP at 6 µg per reaction. CDC25a was also immunoprecipitated by rabbit anti-CDC25a antibody A300-076A. For blotting immunoprecipitated CDC25a, A300-075A was used at 1 µg/ml. *Detection:* Chemiluminescence with an exposure time of 3 minutes.