

MLL1 Antibody

Rabbit Polyclonal

Antigen Affinity Purified

Catalog No. A300-087A

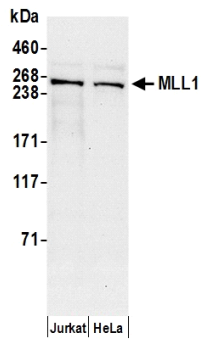
Lot No. A300-087A-2

Protein ID Q03164

Gene ID 4297



APPLICATIONS	WB
REACTIVITY TESTED	Human
PRESUMED REACTIVITY	Based on 100% sequence identity, this antibody is predicted to react with Bovine, Dog, Horse, Rabbit, Panda, Orangutan, Rhesus Monkey, Gorilla, Chimpanzee, Primates, White-tufted-ear marmoset, Crab-eating macaque, European domestic ferret, African elephant and Northern white-cheeked gibbon.
ISOTYPE	IgG
AMOUNT	0.1 ml at 1 mg/ml
STORAGE/SHELF LIFE	2 - 8° C / 1 year from date of receipt
PHYSICAL STATE	Liquid
BUFFER	Tris-citrate/phosphate buffer, pH 7 to 8 containing 0.09% Sodium Azide
ORIGIN	USA
PRODUCTION PROCEDURES	<p>Antibody was affinity purified using an epitope specific to MLL1 immobilized on solid support.</p> <p>The epitope recognized by A300-087A maps to a region between residues 1320 and 1380 of human myeloid/lymphoid or mixed-lineage leukemia 1 using the number given in Swiss-Prot entry Q03164 (GeneID 4297). The epitope is found in the N-terminal 300 kDa fragment generated by proteolytic cleavage. The epitope is not found in isoform 14P-18B of MLL1.</p> <p>Immunoglobulin concentration was determined by extinction coefficient: absorbance at 280 nm of 1.4 equals 1.0 mg of IgG.</p>
APPLICATIONS	<p>Centrifuge tube to remove product from lid. Optimal working dilutions should be determined experimentally by the investigator. Prepare working dilution immediately before use.</p> <p>Western Blot 1:500 - 1:2,500</p>
ADDITIONAL INFO	<p>http://www.bethyl.com/product/A300-087A</p> <p>Use the link above to view SDS, a current list of citations, and other product specific information.</p>



Detection of Human MLL1 by Western Blot. *Samples:* Nuclear extract (50 μ g) from Jurkat and HeLa cells. *Antibodies:* Affinity purified rabbit anti-MLL1 antibody A300-087A (lot A300-087A-2) used for WB at 1 μ g/ml. *Detection:* Chemiluminescence with an exposure time of 30 seconds.