

Phospho Paxillin (S178) Antibody

Rabbit Polyclonal

Antigen Affinity Purified Protein ID NP_002850.1

Catalog No. A300-100A GeneID 5829

Lot No. A300-100A-1



APPLICATIONS	WB
SPECIES REACTIVITY	Mouse
PRESUMED REACTIVITY	Based on 100% sequence identity, this antibody is predicted to react with Human and Rat
AMOUNT	100 µl
CONCENTRATION	1000 µg/ml
STORAGE/SHELF LIFE	2 - 8° C / 1 year from date of receipt
PHYSICAL STATE	Liquid
BUFFER	Tris-citrate/phosphate buffer, pH 7 to 8 containing 0.09% Sodium Azide
ISOTYPE	IgG
ORIGIN	USA
PRODUCTION PROCEDURES	Antibody was affinity purified using a phospho epitope specific to serine 178 of Paxillin immobilized on solid support.

The epitope recognized by A300-100A maps surrounding serine 178 of human Paxillin using the numbering given in entry NP_002850.1 (GeneID 5829)

Immunoglobulin concentration was determined by extinction coefficient: absorbance at 280 nm of 1.4 equals 1.0 mg of IgG.

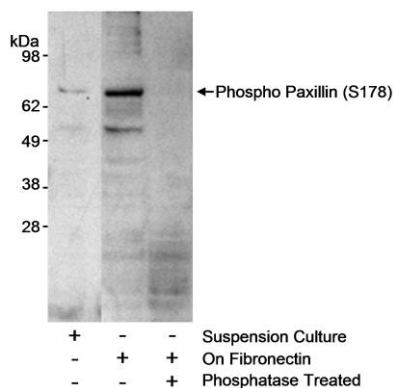
APPLICATIONS Centrifuge tube to remove product from lid. Optimal working dilutions should be determined experimentally by the investigator. Prepare working dilution immediately before use.

Western Blot 1:1,000 – 1: 5,000

APPLICATION NOTES Western blot of lysates performed using standard western blot reagents and 4-20% SDS-PAGE.

ADDITIONAL INFO <https://www.bethyl.com/product/A300-100A>
Use the link above to view SDS, a current list of citations, and other product specific information.

This document certifies that this product has met all of the quality control standards defined by Bethyl Laboratories, Inc.
Eric McIntush, PhD | Chief Scientific Officer Date: June 21, 2019



Detection of mouse phospho Paxillin (Ser178) by western blot. *Samples:* Whole cell lysate (approximately 2.4×10^5 cells/lane) from NIH 3T3 cells that were serum starved for 16 hours and then grown in suspension culture or plated on fibronectin (50 $\mu\text{g}/\text{ml}$). Whole cell lysate from cells grown on fibronectin was untreated or treated with lambda phosphatase. *Antibody:* Affinity purified rabbit anti-phospho Paxillin (Ser178) antibody A300-100A used for WB at 1 $\mu\text{g}/\text{ml}$. *Detection:* Chemiluminescence with an exposure time of 30 seconds.