

ADNP Antibody

Rabbit Polyclonal

Antigen Affinity Purified

Protein ID NP_056154.1

Catalog No. A300-104A

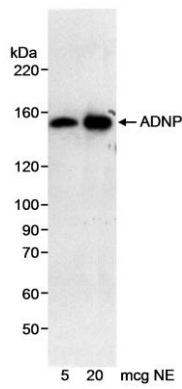
GeneID 23394

Lot No. A300-104A-2

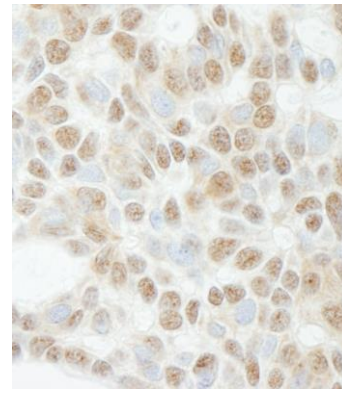


APPLICATIONS	WB, IHC
SPECIES REACTIVITY	Human
AMOUNT	100 µl
CONCENTRATION	1000 µg/ml
STORAGE/SHELF LIFE	2 - 8° C / 1 year from date of receipt
PHYSICAL STATE	Liquid
BUFFER	Tris-citrate/phosphate buffer, pH 7 to 8 containing 0.09% Sodium Azide
ISOTYPE	IgG
ORIGIN	USA
PRODUCTION PROCEDURES	<p>Antibody was affinity purified using an epitope specific to ADNP immobilized on solid support.</p> <p>The epitope recognized by A300-104A maps to a region between residues 1050 and the C-terminus (residue 1102) of human Activity-Dependent Neuroprotective Protein using the numbering given in entry NP_056154.1 (GeneID 23394)</p> <p>Immunoglobulin concentration was determined by extinction coefficient: absorbance at 280 nm of 1.4 equals 1.0 mg of IgG.</p>
APPLICATIONS	<p>Centrifuge tube to remove product from lid. Optimal working dilutions should be determined experimentally by the investigator. Prepare working dilution immediately before use.</p> <p>Western Blot 1:2,500 - 1:15,000</p> <p>Immunohistochemistry 1:500 - 1:2,000. Epitope retrieval with citrate buffer pH 6.0 is recommended for FFPE tissue sections.</p>
APPLICATION NOTES	Western blot of lysates performed using standard western blot reagents and 4-8% SDS-PAGE.
IHC HUMAN CONTROLS	Breast Carcinoma, Metastatic Lymph Node, Ovarian Carcinoma, Skin Basal Cell Carcinoma
ADDITIONAL INFO	<p>https://www.bethyl.com/product/A300-104A</p> <p>Use the link above to view SDS, a current list of citations, and other product specific information.</p>

This document certifies that this product has met all of the quality control standards defined by Bethyl Laboratories, Inc.
Eric McIntush, PhD | Chief Scientific Officer Date: June 21, 2019



Detection of human ADNP by western blot. *Samples:* Nuclear extract (5 or 20 μ g) from HeLa cells. *Antibody:* Affinity purified rabbit anti-ADNP antibody A300-104A used at 0.2 μ g/ml. *Detection:* Chemiluminescence with an exposure time of 20 minutes.



Detection of human ADNP by immunohistochemistry. *Sample:* FFPE section of human skin basal cell carcinoma. *Antibody:* Affinity purified rabbit anti-ADNP (Cat. No. A300-104A Lot2) used at a dilution of 1:1,000 (1 μ g/ml). *Detection:* DAB