

Menin Antibody

Rabbit Polyclonal

Antigen Affinity Purified

Protein ID NP_000235.2

Catalog No. A300-105A

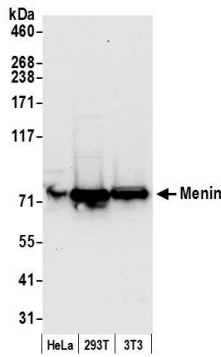
GeneID 4221

Lot No. A300-105A-7



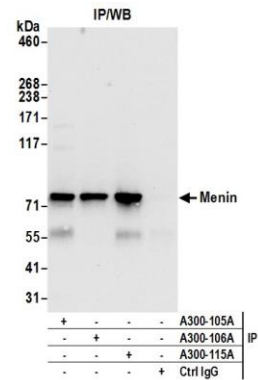
APPLICATIONS	WB, IP, IHC-P
SPECIES REACTIVITY	Human, Mouse
PRESUMED REACTIVITY	Based on 100% sequence identity, this antibody is predicted to react with Rat, Dog and Bovine
ISOTYPE	IgG
AMOUNT	100 µl at 1 mg/ml
STORAGE/SHELF LIFE	2 - 8° C / 1 year from date of receipt
PHYSICAL STATE	Liquid
BUFFER	Tris-citrate/phosphate buffer, pH 7 to 8 containing 0.09% Sodium Azide
ORIGIN	USA
PRODUCTION PROCEDURES	Antibody was affinity purified using an epitope specific to Menin immobilized on solid support. The epitope recognized by A300-105A maps to a region between residue 575 and the C-terminus (residue 615) of human Multiple Endocrine Neoplasia 1 using the numbering given in entry NP_000235.2 (GeneID 4221). Immunoglobulin concentration was determined by extinction coefficient: absorbance at 280 nm of 1.4 equals 1.0 mg of IgG.
APPLICATIONS	Centrifuge tube to remove product from lid. Optimal working dilutions should be determined experimentally by the investigator. Prepare working dilution immediately before use. Western Blot 1:2,000 - 1:10,000 Immunoprecipitation 2 to 10 µg/mg of lysate Immunohistochemistry 1:500 to 1:2,000. Epitope retrieval with Tris-EDTA pH9.0 is recommended for FFPE tissue sections.
APPLICATION NOTES	Western blot of immunoprecipitates performed using ReliaBLOT® Reagents (Cat. No. WB120) and 4-8% SDS-PAGE. Western blot of lysates performed using standard western blot reagents and 4-8% SDS-PAGE.
IHC HUMAN CONTROLS	Breast Carcinoma, Non-Small Cell Lung Cancer, Prostate Carcinoma
ADDITIONAL INFO	http://www.bethyl.com/product/A300-105A Use the link above to view SDS, a current list of citations, and other product specific information.

Menin Antibody A300-105A



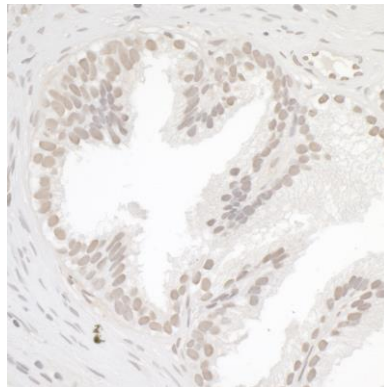
Detection of Human and Mouse Menin by Western Blot.

Samples: Whole cell lysate (50 µg) from HeLa, 293T, and mouse NIH3T3 cells prepared using NETN lysis buffer. *Antibody:* Affinity purified rabbit anti-Menin antibody A300-105A (lot A300-105A-7) used for WB at 0.1 µg/ml. *Detection:* Chemiluminescence with an exposure time of 10 seconds.



Detection of Human Menin by Western Blot of Immunoprecipitates.

Samples: Whole cell lysate (0.5 or 1.0 mg per IP reaction; 20% of IP loaded) from HeLa cells prepared using NETN lysis buffer. *Antibodies:* Affinity purified rabbit anti-Menin antibody A300-105A (lot A300-105A-7) used for IP at 6 µg per reaction. Menin was also immunoprecipitated by a goat anti-Menin antibody A300-106A and rabbit anti-Menin antibody A300-115A. For blotting immunoprecipitated Menin, A300-105A was used at 1 µg/ml. *Detection:* Chemiluminescence with an exposure time of 10 seconds.



Detection of Human Menin by Immunohistochemistry.

Sample: FFPE section of human prostate carcinoma. *Antibody:* Affinity purified rabbit anti-Menin (Cat. No. A300-105A Lot7) used at a dilution of 1:1,000 (1µg/ml). *Detection:* DAB