

Sp1 Antibody

Rabbit Polyclonal

Antigen Affinity Purified Protein ID XP_028606.4

Catalog No. A300-134A GeneID 6667

Lot No. A300-134A-5



APPLICATIONS	WB, IP, IHC, ChIP-Seq
SPECIES REACTIVITY	Human, Mouse
AMOUNT	100 µl
CONCENTRATION	1000 µg/ml
STORAGE/SHELF LIFE	2 - 8° C / 1 year from date of receipt
PHYSICAL STATE	Liquid
BUFFER	Tris-citrate/phosphate buffer, pH 7 to 8 containing 0.09% Sodium Azide
ISOTYPE	IgG
ORIGIN	USA
PRODUCTION PROCEDURES	Antibody was affinity purified using the antigen immobilized on solid support. The epitope recognized by A300-134A maps to a region between residue 750 and the C-terminus (residue 785) using the numbering given in entry XP_028606.4 (GeneID 6667). Immunoglobulin concentration was determined by extinction coefficient: absorbance at 280 nm of 1.4 equals 1.0 mg of IgG.

APPLICATIONS Centrifuge tube to remove product from lid. Optimal working dilutions should be determined experimentally by the investigator. Prepare working dilution immediately before use.

Western Blot	1:2,000 - 1:10,000
Immunoprecipitation	2 - 10 µg/mg lysate
Immunohistochemistry	1:2,000 - 1:10,000. Epitope retrieval with citrate buffer pH 6.0 is recommended for FFPE tissue sections.
ChIP-Seq	4 µg/30 µg chromatin

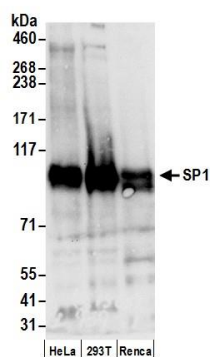
APPLICATION NOTES Western blot of immunoprecipitates performed using Normal Pig Serum (Cat. No. S100-020), Goat anti-Rabbit Light Chain HRP Conjugate (Cat. No. A120-113P) and 4-8% SDS-PAGE (link to IP-western blot protocol in Additional Info section below).

IHC HUMAN CONTROLS Western blot of lysates performed using standard western blot reagents and 4-8% SDS-PAGE. Breast Carcinoma, Ovarian Carcinoma

IHC MOUSE CONTROLS Renal Cell Carcinoma

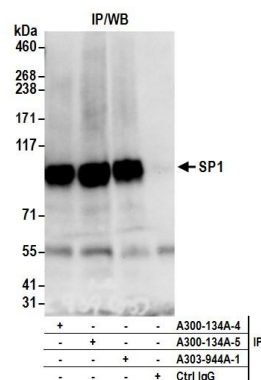
ADDITIONAL INFO <https://www.bethyl.com/product/A300-134A>
Use the link above to view SDS, a current list of citations, and other product specific information.
IP-western blot protocol: https://www.bethyl.com/content/protocol_IP_WB

This document certifies that this product has met all of the quality control standards defined by Bethyl Laboratories, Inc.
Eric McIntush, PhD | Chief Scientific Officer Date: June 21, 2019



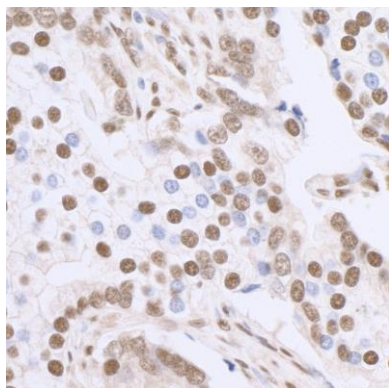
Detection of human and mouse SP1 by western blot.

Samples: Whole cell lysate (50 µg) from HeLa, HEK293T, and mouse Renca cells prepared using NETN lysis buffer. *Antibody:* Affinity purified rabbit anti-SP1 antibody A300-134A (lot A300-134A-5) used for WB at 0.1 µg/ml. *Detection:* Chemiluminescence with an exposure time of 10 seconds.



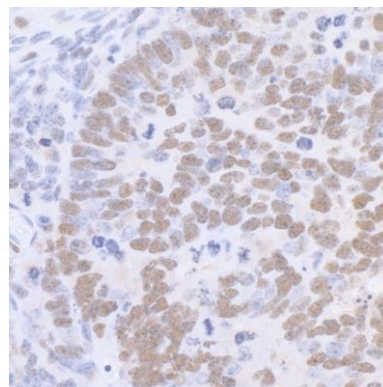
Detection of human SP1 by western blot of immunoprecipitates.

Samples: Whole cell lysate (0.5 or 1.0 mg per IP reaction; 20% of IP loaded) from HeLa cells prepared using NETN lysis buffer. *Antibodies:* Affinity purified rabbit anti-SP1 antibody A300-134A (lot A300-134A-5) used for IP at 6 µg per reaction. SP1 was also immunoprecipitated by a previous lot of this antibody (A300-134A-4) and rabbit anti-SP1 antibody A303-944A. For blotting immunoprecipitated SP1, A300-134A was used at 1 µg/ml. *Detection:* Chemiluminescence with an exposure time of 10 seconds.



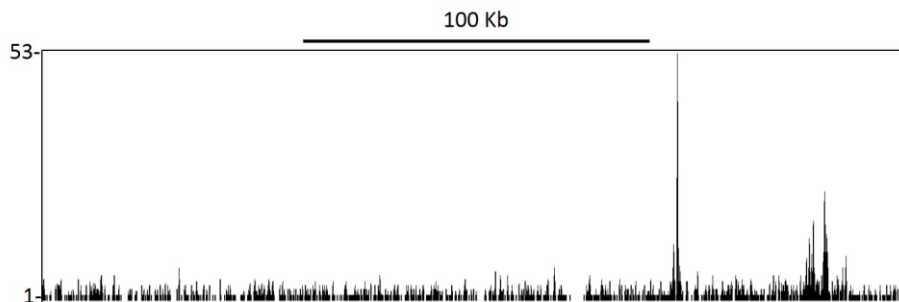
Detection of human SP1 by immunohistochemistry.

Sample: FFPE section of human breast carcinoma. *Antibody:* Affinity purified rabbit anti-SP1 (Cat. No. A300-134A Lot5) used at a dilution of 1:5,000 (0.2µg/ml). *Detection:* DAB



Detection of mouse SP1 by immunohistochemistry.

Sample: FFPE section of mouse renal cell carcinoma. *Antibody:* Affinity purified rabbit anti-SP1 (Cat. No. A300-134A Lot5) used at a dilution of 1:5,000 (0.2µg/ml). *Detection:* DAB



Localization of Sp1 Binding Sites by ChIP–sequencing. Chromatin from acute myeloid leukemia cell line was immunoprecipitated with anti–Sp1 antibody A300–134A and analyzed by DNA sequencing. The figure illustrates the peak distribution of Sp1 binding within a 250 Kb region of chromosome 6 as detected using anti–Sp1 A300–134A. ChIP–seq validation performed by Active Motif, Carlsbad, CA.