

ATM Antibody

Goat Polyclonal

Antigen Affinity Purified

Protein ID NP_000042.2

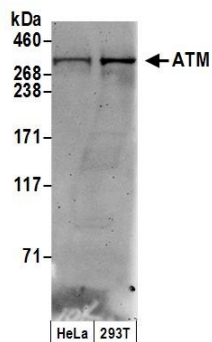
Catalog No. A300-136A-T

GeneID 472

Lot No. A300-136A-T-1



APPLICATIONS	WB, IP, PLA
SPECIES REACTIVITY	Human, Mouse
ISOTYPE	IgG
AMOUNT	20 µl (2 blots)
STORAGE/SHELF LIFE	2 - 8° C / 1 year from date of receipt
PHYSICAL STATE	Liquid
BUFFER	Tris-buffered Saline containing 0.1% BSA and 0.09% Sodium Azide
ORIGIN	USA
PRODUCTION PROCEDURES	Antibody was affinity purified using an epitope specific to ATM immobilized on solid support. The epitope recognized by A300-136A-T maps to a region between residues 2550 and 2600 of human Ataxia Telangiectasia Mutated using the numbering given in entry NP_000042.2 (GeneID 472). Immunoglobulin concentration was determined by extinction coefficient: absorbance at 280 nm of 1.4 equals 1.0 mg of IgG.
APPLICATIONS	Centrifuge tube to remove product from lid. Optimal working dilutions should be determined experimentally by the investigator. Prepare working dilution immediately before use. Western Blot 1:1000 Immunoprecipitation The antibody contained within A300-136A-T has been qualified for use in immunoprecipitation; however, we recommend using the alternative formulation of this antibody found as product A300-136A. Proximity Ligation Assay The antibody contained within A300-136A-T has been qualified for use in PLA; however, we recommend using the alternative formulation of this antibody found as product A300-136A.
APPLICATION NOTES	Western blot of immunoprecipitates performed using ReliaBLOT® Reagents (Cat. No. WB120) and 3-8% SDS-PAGE. Western blot of lysates performed using standard western blot reagents and 3-8% SDS-PAGE.
ADDITIONAL INFO	http://www.bethyl.com/product/A300-136A-T Use the link above to view SDS, a current list of citations, and other product specific information.



Detection of human ATM by western blot. *Samples:* Whole cell lysate (50 μ g) from HeLa and 293T cells prepared using NETN lysis buffer. *Antibody:* Affinity purified goat anti-ATM antibody A300-136A-T (lot A300-136A-T-1) used at 1:1000. *Detection:* Chemiluminescence with an exposure time of 3 minutes.