

# QKI Antibody

Rabbit Polyclonal

Antigen Affinity Purified Protein ID AAH19917.1

Catalog No. A300-183A-T GeneID 9444

Lot No. A300-183A-T-2

---

<b>APPLICATIONS</b>	WB, IP, IHC
<b>SPECIES REACTIVITY</b>	Human, Mouse
<b>PRESUMED REACTIVITY</b>	Based on 100% sequence identity, this antibody is predicted to react with Rat, Zebrafish, X. laevis, Chicken, Bovine, Dog, Horse, Pig and Cat
<b>AMOUNT</b>	10 µl
<b>CONCENTRATION</b>	1000 µg/ml
<b>STORAGE/SHELF LIFE</b>	2 – 8°C / 1 year from date of receipt
<b>PHYSICAL STATE</b>	Liquid
<b>BUFFER</b>	Tris–citrate/phosphate buffer, pH 7 to 8 containing 0.09% Sodium Azide
<b>ISOTYPE</b>	IgG
<b>ORIGIN</b>	USA
<b>PRODUCTION PROCEDURES</b>	Antibody was affinity purified using an epitope specific to QKI immobilized on solid support.

The epitope recognized by A300-183A-T maps to the C-terminus of isoform 5 of human quaking homolog according to entry AAH19917.1 (GeneID 9444). The epitope is not found in isoforms 1, 2, 3, 4, 6, 7 or 7B according to TrEMBL entries Q9P0Y1, Q9P0Y0, Q9P0X6, Q9P0X8, Q96PU7, Q969L9 and Q96PU6, respectively.

**APPLICATIONS** Centrifuge tube to remove product from lid. Optimal working dilutions should be determined experimentally by the investigator. Prepare working dilution immediately before use.

Western Blot 1:5,000 – 1:25,000

Immunoprecipitation 2 – 10 µg/mg lysate

Immunohistochemistry 1:500 – 1:2,000. Epitope retrieval with Tris–EDTA pH 9.0 is recommended for FFPE tissue sections.

**ADDITIONAL INFO** <https://www.bethyl.com/product/A300-183A-T>

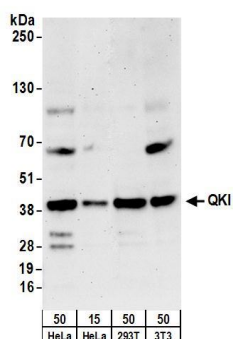
Use the link above to view SDS, a current list of citations, and other product specific information.

IP–western blot protocol: [https://www.bethyl.com/content/protocol\\_IP\\_WB](https://www.bethyl.com/content/protocol_IP_WB)

This document certifies that this product has met all of the quality control standards defined by Bethyl Laboratories, Inc.

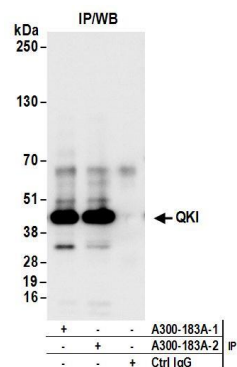
Michael Spencer, PhD

Date: June 6, 2022



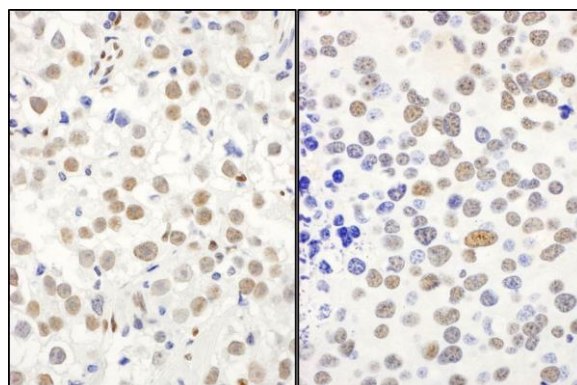
#### Detection of human and mouse QKI by western blot.

**Samples:** Whole cell lysate from HeLa (15 and 50 µg), HEK293T (50µg), and mouse NIH 3T3 (50µg) cells.  
**Antibodies:** Affinity purified rabbit anti-QKI antibody A300-183A (lot A300-183A-2) used for WB at 0.04 µg/ml.  
**Detection:** Chemiluminescence with an exposure time of 3 minutes.



#### Detection of human QKI by western blot of immunoprecipitates.

**Samples:** Whole cell lysate (1 mg for IP; 20% of IP loaded) from HeLa cells.  
**Antibodies:** Affinity purified rabbit anti-QKI antibody A300-183A (lot A300-183A-2) used for IP at 6 µg/mg lysate. QKI was also immunoprecipitated by a prior lot (A300-183A-1) of this antibody. For blotting immunoprecipitated QKI, A300-183A was used at 1 µg/ml.  
**Detection:** Chemiluminescence with an exposure time of 10 seconds.



#### Detection of human and mouse QKI by immunohistochemistry.

**Sample:** FFPE sections of human testicular seminoma (left) and mouse renal cell carcinoma (right).  
**Antibody:** Affinity purified rabbit anti-QKI (Cat. No. A300-183A Lot2) used at a dilution of 1:1,000 (1 µg/ml).  
**Detection:** DAB