

CKII alpha' Antibody

Rabbit Polyclonal

Antigen Affinity Purified Protein ID NP_001887.1

Catalog No. A300-199A-T GenelD 1459

Lot No. A300-199A-T-5

APPLICATIONS	WB, IP
SPECIES REACTIVITY	Human, Mouse
PRESUMED REACTIVITY	Based on 100% sequence identity, this antibody is predicted to react with Bovine
AMOUNT	10 µl
CONCENTRATION	1000 µg/ml
STORAGE/SHELF LIFE	2 – 8°C / 1 year from date of receipt
PHYSICAL STATE	Liquid
BUFFER	Tris-citrate/phosphate buffer, pH 7 to 8 containing 0.09% Sodium Azide
ISOTYPE	IgG
ORIGIN	USA
PRODUCTION PROCEDURES	Antibody was affinity purified using an epitope specific to CKII alpha' immobilized on solid support.

The epitope recognized by A300-199A-T maps to a region between residue 300 and the C-terminus (residue 350) of human Casein Kinase 2, alpha 2 using the numbering given in entry NP_001887.1 (GeneID 1459).

APPLICATIONS Centrifuge tube to remove product from lid. Optimal working dilutions should be determined experimentally by the investigator. Prepare working dilution immediately before use.

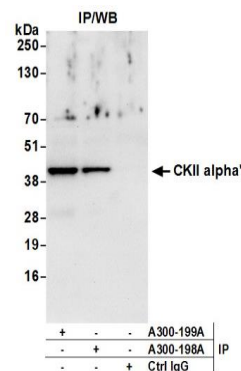
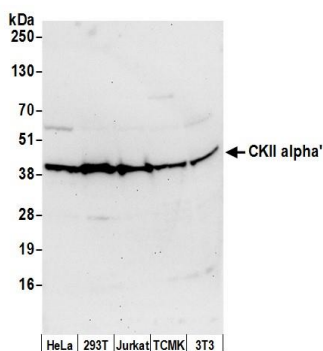
Western Blot 1:2,000 – 1:10,000

Immunoprecipitation 2 – 10 µg/mg lysate

ADDITIONAL INFO <https://www.bethyl.com/product/A300-199A-T>

Use the link above to view SDS, a current list of citations, and other product specific information. IP-western blot protocol: https://www.bethyl.com/content/protocol_IP_WB

This document certifies that this product has met all of the quality control standards defined by Bethyl Laboratories, Inc.
Michael Spencer, PhD Date: June 6, 2022



Detection of human and mouse CKII alpha' by western blot. *Samples:* Whole cell lysate (50 µg) from HeLa, HEK293T, Jurkat, mouse TCMK-1, and mouse NIH 3T3 cells prepared using NETN lysis buffer. *Antibody:* Affinity purified rabbit anti-CKII alpha' antibody A300-199A (lot A300-199A-5) used for WB at 0.1 µg/ml. *Detection:* Chemiluminescence with an exposure time of 30 seconds.

Detection of human CKII alpha' by western blot of immunoprecipitates. *Samples:* Whole cell lysate (0.5 or 1.0 mg per IP reaction; 20% of IP loaded) from HeLa cells prepared using NETN lysis buffer. *Antibodies:* Affinity purified rabbit anti-CKII alpha' antibody A300-199A (lot A300-199A-5) used for IP at 6 µg per reaction. CKII alpha' was also immunoprecipitated by rabbit anti-CKII alpha' antibody A300-198A. For blotting immunoprecipitated CKII alpha', A300-199A was used at 1 µg/ml. *Detection:* Chemiluminescence with an exposure time of 10 seconds.