

# BRD2 Antibody

Goat Polyclonal

Antigen Affinity Purified

Protein ID NP\_005095.1

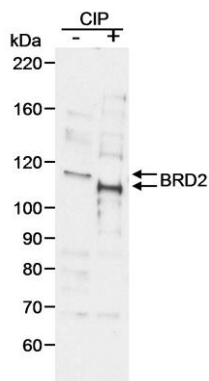
Catalog No. A300-204A

GeneID 6046

Lot No. A300-204A-1



<b>APPLICATIONS</b>	WB
<b>SPECIES REACTIVITY</b>	Human
<b>PRESUMED REACTIVITY</b>	Based on 100% sequence identity, this antibody is predicted to react with Bovine
<b>ISOTYPE</b>	IgG
<b>AMOUNT</b>	100 µl at 1 mg/ml
<b>STORAGE/SHELF LIFE</b>	2 - 8° C / 1 year from date of receipt
<b>PHYSICAL STATE</b>	Liquid
<b>BUFFER</b>	Tris-citrate/phosphate buffer, pH 7 to 8 containing 0.09% Sodium Azide
<b>ORIGIN</b>	USA
<b>PRODUCTION PROCEDURES</b>	Antibody was affinity purified using an epitope specific to BRD2 immobilized on solid support.  The epitope recognized by A300-204A maps to a region between residues 550 and 600 of human Bromodomain Containing 2 using the numbering given in entry NP_005095.1 (GeneID 6046).  Immunoglobulin concentration was determined by extinction coefficient: absorbance at 280 nm of 1.4 equals 1.0 mg of IgG.
<b>APPLICATIONS</b>	Centrifuge tube to remove product from lid. Optimal working dilutions should be determined experimentally by the investigator. Prepare working dilution immediately before use.  Western Blot                      1:10,000 - 1:40,000  Immunoprecipitation            Not recommended
<b>APPLICATION NOTES</b>	Western blot of lysates performed using standard western blot reagents and 4-8% SDS-PAGE.
<b>ADDITIONAL INFO</b>	<a href="http://www.bethyl.com/product/A300-204A">http://www.bethyl.com/product/A300-204A</a>  Use the link above to view SDS, a current list of citations, and other product specific information.



**Detection of human BRD2 by western blot.** *Sample:* RIPA extract (10  $\mu$ g) from HeLa cells that was untreated (-) or treated (+) with CIP (calf intestinal phosphatase). *Antibody:* Affinity purified goat anti-BRD2 (Cat. No. A300-204A) used at 0.05  $\mu$ g/ml followed by rabbit anti-goat HRP (A50-100P, 1:20,000). *Detection:* Chemiluminescence with 1 minute exposure.