

FKBP-135 Antibody

Rabbit Polyclonal

Antigen Affinity Purified

Protein ID Q9Y4D0

Catalog No. A300-211A

GeneID 23307

Lot No. A300-211A-1



APPLICATIONS IP

SPECIES REACTIVITY Human

AMOUNT 100 µl

CONCENTRATION 1000 µg/ml

STORAGE/SHELF LIFE 2 - 8° C / 1 year from date of receipt

PHYSICAL STATE Liquid

BUFFER Tris-citrate/phosphate buffer, pH 7 to 8 containing 0.09% Sodium Azide

ISOTYPE IgG

ORIGIN USA

PRODUCTION PROCEDURES Antibody was affinity purified using an epitope specific to FKBP-135 immobilized on solid support.

The epitope recognized by A300-211A maps to a region between residues 1175 and the C-terminus (residue 1234) of human FK506-binding protein 135 using the numbering given in TrEMBL entry Q9Y4D0 (GeneID 23307).

Immunoglobulin concentration was determined by extinction coefficient: absorbance at 280 nm of 1.4 equals 1.0 mg of IgG.

APPLICATIONS Centrifuge tube to remove product from lid. Optimal working dilutions should be determined experimentally by the investigator. Prepare working dilution immediately before use.

Western Blot Not recommended. Use rabbit anti-FKBP-135 antibody A300-209A or A300-210A.

Immunoprecipitation 1 - 4 µg/mg lysate

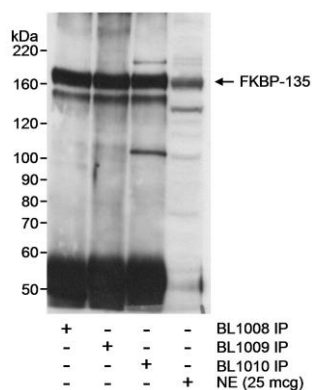
APPLICATION NOTES Western blot of immunoprecipitates performed using Normal Pig Serum (Cat. No. S100-020), Goat anti-Rabbit Light Chain HRP Conjugate (Cat. No. A120-113P) and 4-8% SDS-PAGE (link to IP-western blot protocol in Additional Info section below).

ADDITIONAL INFO <https://www.bethyl.com/product/A300-211A>

Use the link above to view SDS, a current list of citations, and other product specific information.

IP-western blot protocol: https://www.bethyl.com/content/protocol_IP_WB

This document certifies that this product has met all of the quality control standards defined by Bethyl Laboratories, Inc.
Eric McIntush, PhD | Chief Scientific Officer Date: June 21, 2019



Detection of human FKBP-135 by western blot and immunoprecipitation. *Samples:* Nuclear extract (NE; 1 mg for IP; 25 μ g for WB) from HeLa cells. *Antibodies:* Affinity purified rabbit anti-FKBP-135 antibodies BL1008 (Cat. No. A300-209A), BL1009 (Cat. No. A300-210A) and BL1010 (Cat. No. A300-211A) used at 2 μ g/mg extract for IP. FKBP-135 in NE and immunoprecipitated FKBP-135 were detected using BL1008 (Cat. No. A300-209A) at 0.2 μ g/ml. *Detection:* Chemiluminescence with an exposure time of 10 minutes.