

KIF14 Antibody

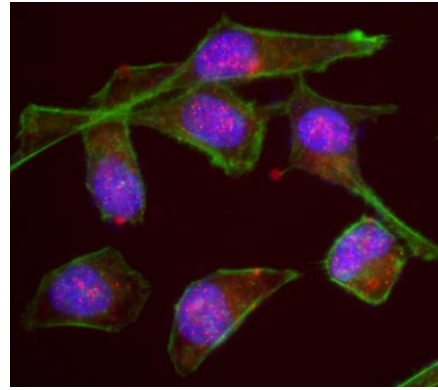
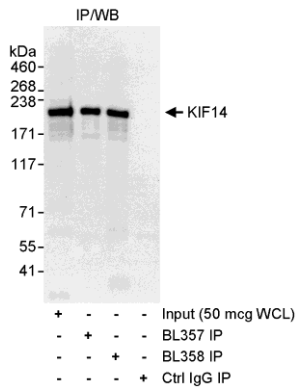
Rabbit Polyclonal

Antigen Affinity Purified Protein ID NP_055690.1
Catalog No. A300-233A Gene ID 9928
Lot No. A300-233A-1



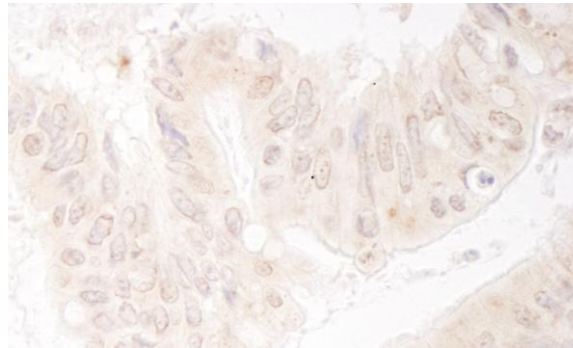
APPLICATIONS	WB, IP, IHC-P, ICC, IF										
REACTIVITY TESTED	Human										
ISOTYPE	IgG										
AMOUNT	0.1 ml at 1 mg/ml										
STORAGE/SHELF LIFE	2 - 8° C / 1 year from date of receipt										
PHYSICAL STATE	Liquid										
BUFFER	Tris-citrate/phosphate buffer, pH 7 to 8 containing 0.09% Sodium Azide										
ORIGIN	USA										
PRODUCTION PROCEDURES	<p>Antibody was affinity purified using an epitope specific to KIF14 immobilized on solid support.</p> <p>The epitope recognized by A300-233A maps to a region between residues 900 and 950 of human Kinesin Family Member 14 using the numbering given in entry NP_055690.1 (GeneID 9928).</p> <p>Immunoglobulin concentration was determined by extinction coefficient: absorbance at 280 nm of 1.4 equals 1.0 mg of IgG.</p>										
APPLICATIONS	<p>Centrifuge tube to remove product from lid. Optimal working dilutions should be determined experimentally by the investigator. Prepare working dilution immediately before use.</p> <table><tr><td>Western Blot</td><td>1:2,000 - 1:10,000</td></tr><tr><td>Immunoprecipitation</td><td>1 to 4 µg/mg of lysate</td></tr><tr><td>Immunohistochemistry</td><td>1:500 to 1:2,000. Epitope retrieval with Tris-EDTA pH9.0 is recommended for FFPE tissue sections.</td></tr><tr><td>Immunocytochemistry</td><td>1:250 to 1:1,000. Permeabilization with Triton-X 100 is recommended for formaldehyde-fixed cells. Fixation with acetone is not recommended.</td></tr><tr><td>Immunofluorescence</td><td>1:250 to 1:1,000.</td></tr></table>	Western Blot	1:2,000 - 1:10,000	Immunoprecipitation	1 to 4 µg/mg of lysate	Immunohistochemistry	1:500 to 1:2,000. Epitope retrieval with Tris-EDTA pH9.0 is recommended for FFPE tissue sections.	Immunocytochemistry	1:250 to 1:1,000. Permeabilization with Triton-X 100 is recommended for formaldehyde-fixed cells. Fixation with acetone is not recommended.	Immunofluorescence	1:250 to 1:1,000.
Western Blot	1:2,000 - 1:10,000										
Immunoprecipitation	1 to 4 µg/mg of lysate										
Immunohistochemistry	1:500 to 1:2,000. Epitope retrieval with Tris-EDTA pH9.0 is recommended for FFPE tissue sections.										
Immunocytochemistry	1:250 to 1:1,000. Permeabilization with Triton-X 100 is recommended for formaldehyde-fixed cells. Fixation with acetone is not recommended.										
Immunofluorescence	1:250 to 1:1,000.										
APPLICATION NOTES	IHC validation was performed using Immunohistochemistry Accessory Kit (Cat. # IHC-101). Epitope Retrieval Buffer- High pH Concentrate (Cat. # IHC-101J) was substituted for Epitope Retrieval Buffer - Reduced pH Concentrate.										
IHC HUMAN CONTROLS	Colon Carcinoma, HeLa Cells, Pancreatic Islet Cell Tumor										
ADDITIONAL INFO	<p>http://www.bethyl.com/product/A300-233A</p> <p>Use the link above to view SDS, a current list of citations, and other product specific information.</p>										

KIF14 Antibody: A300-233A



Detection of Human KIF14 by Western Blot and Immunoprecipitation. *Samples:* Whole cell lysate (WCL; 50 µg for input; 1 mg/IP, 20% of IP loaded) from HeLa cells. *Antibodies:* Affinity purified rabbit anti-KIF14 antibodies BL358 (Cat. No. A300-233A) used for WB at 1 µg/ml and used for IP at 3 µg/mg lysate. KIF14 was also immunoprecipitated using rabbit anti-KIF14 antibody BL357 (Cat. No. A300-232A). *Detection:* Chemiluminescence with an exposure time of 30 seconds.

Detection of Human KIF14 by Immunocytochemistry. *Sample:* Formaldehyde-fixed asynchronous HeLa cells. *Antibody:* Affinity purified rabbit anti-KIF14 (Cat. No. A300-233A Lot1) used at a dilution of 1:500 (2µg/ml). *Detection:* Red-fluorescent goat anti-rabbit IgG highly cross-adsorbed Antibody used at a dilution of 1:100.



Detection of Human KIF14 by Immunohistochemistry. *Sample:* FFPE section of human colon carcinoma. *Antibody:* Affinity purified rabbit anti-KIF14 (Cat. No. A300-233A Lot1) used at a dilution of 1:1,000 (1µg/ml). *Detection:* DAB