

Phospho RPA32 (S33) Antibody

Rabbit Polyclonal

Antigen Affinity Purified

Protein ID NP_002937.1

Catalog No. A300-246A

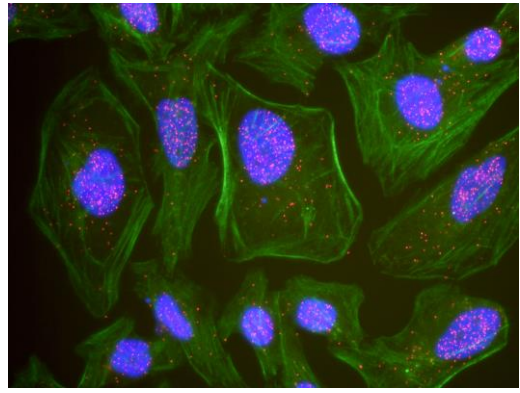
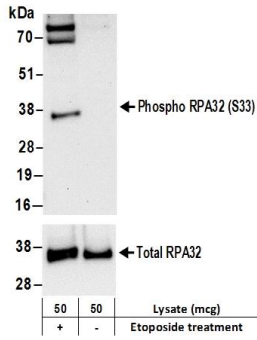
Gene ID 6118

Lot No. A300-246A-5



APPLICATIONS	WB, PLA
REACTIVITY TESTED	Human, Mouse
PRESUMED REACTIVITY	Based on 100% sequence identity, this antibody is predicted to react with Orangutan, Rhesus Monkey, Gorilla, Chimpanzee and Northern white-cheeked gibbon.
ISOTYPE	IgG
AMOUNT	100 µl at 1 mg/ml
STORAGE/SHELF LIFE	2 - 8° C / 1 year from date of receipt
PHYSICAL STATE	Liquid
BUFFER	Tris-citrate/phosphate buffer, pH 7 to 8 containing 0.09% Sodium Azide
ORIGIN	USA
PRODUCTION PROCEDURES	<p>Immunogen was a phosphorylated synthetic peptide, which represented a portion of human replication protein A2, 32 kDa surrounding phosphorylated serine that corresponded to position 33 using the numbering given in entry NP_002937.1 (GeneID 6118).</p> <p>Antibody was affinity purified using the peptide immobilized on solid support.</p> <p>Immunoglobulin concentration was determined by extinction coefficient: absorbance at 280 nm of 1.4 equals 1.0 mg of IgG.</p>
APPLICATIONS	<p>Centrifuge tube to remove product from lid. Optimal working dilutions should be determined experimentally by the investigator. Prepare working dilution immediately before use.</p> <p>Western Blot 1:1,000 - 1:5,000. Numerous bands representing proteins that migrate more slowly than 60 to 70 kDa have been observed during WB. Under some conditions, at least two of these may be more intense than the band that represents phospho RPA32-S33.</p> <p>Immunohistochemistry Not recommended.</p> <p>Proximity Ligation Assay 1:1,000 - 1:10,000</p>
APPLICATION NOTES	Validation by IP/Western Blot was performed using a 4-8% SDS-PAGE gel and ReliaBLOT® Reagents (Cat. No. WB120).
IHC HUMAN CONTROLS	Breast Carcinoma, Colon Carcinoma, Lung Adenocarcinoma, Ovarian Carcinoma, Prostate Carcinoma, Testicular Seminoma
IHC MOUSE CONTROLS	Renal Cell Carcinoma, Teratoma
ADDITIONAL INFO	<p>http://www.bethyl.com/product/A300-246A</p> <p>Use the link above to view SDS, a current list of citations, and other product specific information.</p>

Phospho RPA32 (S33) Antibody: A300-246A



Detection of Human phospho RPA32 (S33) by Western Blot.

Samples: Whole cell lysate (50 μ g) from HeLa cells treated with 100 μ M etoposide for 4 hours (+) or mock treated (-) cells.
Antibodies: Affinity purified rabbit anti-phospho RPA32 (S33) antibody A300-246A (lot A300-246A-5) used for WB at 0.4 μ g/ml. **Detection:** Chemiluminescence with an exposure time of 30 seconds. Lower panel shows Western Blotting for total RPA32 using affinity purified rabbit anti-RPA32 antibody A300-244A at 0.1 μ g/ml with an exposure time of 3 seconds.

This antibody is qualified for the Proximity Ligation Assay (PLA).

PLA uses paired antibodies, so please refer to the PLA page of our website for specific imaging obtained by pairing this antibody with other qualified antibodies. The above image shows representative results for PLA using three color fluorescence, including DAPI stained nuclei (blue), phalloidin stained cytoplasmic F-actin (green), and PLA positive signal (red).