

p53 Antibody

Rabbit Polyclonal

Antigen Affinity Purified

Protein ID P04637

Catalog No. A300-247A

GeneID 7157

Lot No. A300-247A-1



APPLICATIONS WB, IP, IHC, ChIP-Seq, PLA, F

SPECIES REACTIVITY Human

ISOTYPE IgG

AMOUNT 100 µl at 1 mg/ml

STORAGE/SHELF LIFE 2 - 8° C / 1 year from date of receipt

PHYSICAL STATE Liquid

BUFFER Tris-citrate/phosphate buffer, pH 7 to 8 containing 0.09% Sodium Azide

ORIGIN USA

PRODUCTION PROCEDURES Antibody was affinity purified using an epitope specific to p53 immobilized on solid support.

The epitope recognized by A300-247A maps to a region between residues 50 and 100 of human tumor protein p53 using the numbering given in SwissProt entry P04637 (GeneID 7157).

Immunoglobulin concentration was determined by extinction coefficient: absorbance at 280 nm of 1.4 equals 1.0 mg of IgG.

APPLICATIONS Centrifuge tube to remove product from lid. Optimal working dilutions should be determined experimentally by the investigator. Prepare working dilution immediately before use.

Western Blot 1:5,000 - 1:25,000

Immunoprecipitation 2 - 10 µg/mg lysate

Immunohistochemistry 1:1,000 - 1:5,000. Epitope retrieval with citrate buffer pH 6.0 is recommended for FFPE tissue sections.

ChIP-Seq 4 µg/30 µg chromatin

Proximity Ligation Assay 1:1,000 - 1:20,000

Flow Cytometry 1.5 µg per 1 X 10⁶ cells in a 150 µl volume

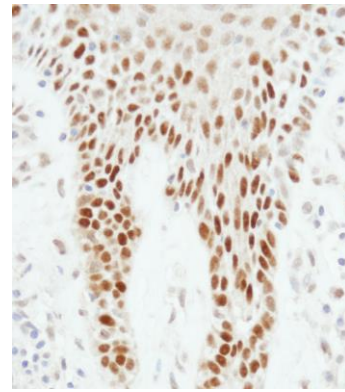
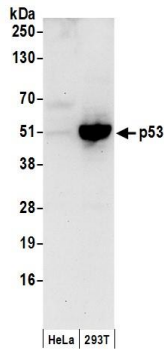
APPLICATION NOTES Western blot of immunoprecipitates performed using ReliaBLOT® Reagents (Cat. No. WB120) and 4-20% SDS-PAGE.

Western blot of lysates performed using standard western blot reagents and 4-20% SDS-PAGE.

IHC HUMAN CONTROLS Lung Adenocarcinoma, Skin Squamous Cell Carcinoma

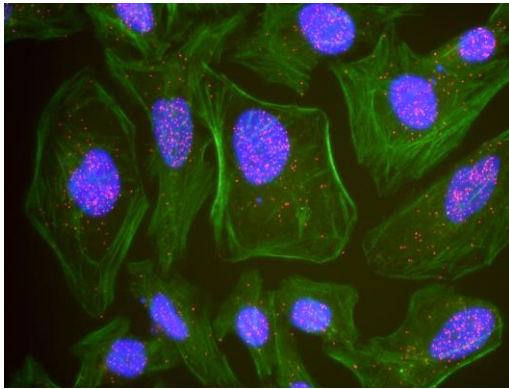
ADDITIONAL INFO <http://www.bethyl.com/product/A300-247A>

Use the link above to view SDS, a current list of citations, and other product specific information.

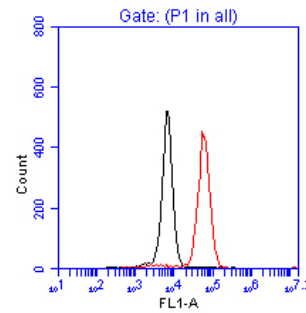


Detection of human p53 by western blot. *Samples:* Whole cell lysate (50 μ g) from HeLa and 293T cells prepared using NETN lysis buffer. *Antibody:* Affinity purified rabbit anti-p53 antibody A300-247A (lot A300-247A-1) used for WB at 0.4 μ g/ml. *Detection:* Chemiluminescence with an exposure time of 30 seconds.

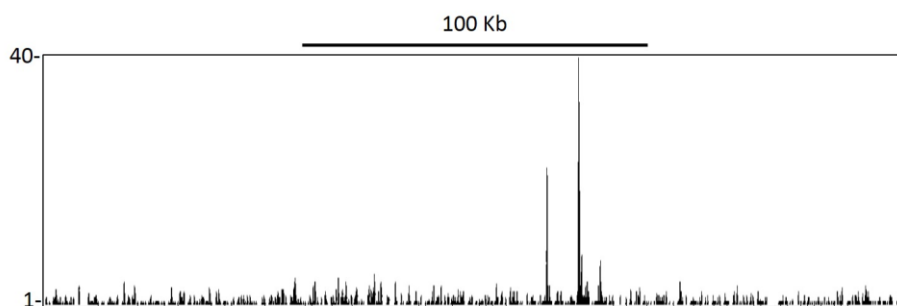
Detection of human p53 by immunohistochemistry. *Sample:* FFPE section of human skin carcinoma. *Antibody:* Affinity purified rabbit anti-p53 (Cat. No. A300-247A Lot1) used at a dilution of 1:1,000 (1 μ g/ml). *Detection:* DAB



This antibody is qualified for the Proximity Ligation Assay (PLA). The above image shows representative results for PLA using three color fluorescence, including DAPI stained nuclei (blue), phalloidin stained cytoplasmic F-actin (green), and PLA positive signal (red).



Flow Cytometrical Analysis of p53 in Jurkat Cells. Jurkat cells were fixed in 1.5% PFA, and permeabilized in 90% Methanol. 1×10^6 cells were stained with 1.5 μ g anti-KLH IgG control or anti-p53 [A300-247A] and secondary FITC-conjugated goat anti-rabbit (in a 150 μ l reaction). anti-KLH control IgG (black); anti-p53 (red).



Localization of p53 Binding Sites by ChIP–sequencing. Chromatin from MCF7 was immunoprecipitated with anti–p53 antibody A300–247A and analyzed by DNA sequencing. The figure illustrates the peak distribution of p53 binding within a 250 Kb region of chromosome 6 as detected using anti–p53 A300–247A. ChIP–seq validation performed by Active Motif, Carlsbad, CA.