

# 53BP1 Antibody

Rabbit Polyclonal

Antigen Affinity Purified

Protein ID NP\_005648.1

Catalog No. A300-273A

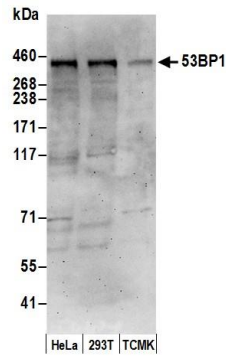
GeneID 7158

Lot No. A300-273A-5



<b>APPLICATIONS</b>	WB
<b>SPECIES REACTIVITY</b>	Human, Mouse
<b>AMOUNT</b>	100 µl
<b>CONCENTRATION</b>	1000 µg/ml
<b>STORAGE/SHELF LIFE</b>	2 - 8° C / 1 year from date of receipt
<b>PHYSICAL STATE</b>	Liquid
<b>BUFFER</b>	Tris-citrate/phosphate buffer, pH 7 to 8 containing 0.09% Sodium Azide
<b>ISOTYPE</b>	IgG
<b>ORIGIN</b>	USA
<b>PRODUCTION PROCEDURES</b>	<p>Antibody was affinity purified using an epitope specific to 53BP1 immobilized on solid support.</p> <p>The epitope recognized by A300-273A maps to a region between residues 1925 and the C-terminus (residue 1972) of human tumor protein p53 binding protein 1 using the numbering given in entry NP_005648.1 (GeneID 7158).</p> <p>Immunoglobulin concentration was determined by extinction coefficient: absorbance at 280 nm of 1.4 equals 1.0 mg of IgG.</p>
<b>APPLICATIONS</b>	<p>Centrifuge tube to remove product from lid. Optimal working dilutions should be determined experimentally by the investigator. Prepare working dilution immediately before use.</p> <p>Western Blot                      1:2,000 - 1:10,000</p> <p>Immunoprecipitation            Not recommended. Use rabbit anti-53BP1 antibody A300-272A.</p>
<b>APPLICATION NOTES</b>	Western blot of lysates performed using standard western blot reagents and 4-8% SDS-PAGE.
<b>ADDITIONAL INFO</b>	<p><a href="https://www.bethyl.com/product/A300-273A">https://www.bethyl.com/product/A300-273A</a></p> <p>Use the link above to view SDS, a current list of citations, and other product specific information.</p>

This document certifies that this product has met all of the quality control standards defined by Bethyl Laboratories, Inc.  
Eric McIntush, PhD | Chief Scientific Officer Date: June 21, 2019

**Detection of human and mouse 53BP1 by western blot.**

*Samples:* Whole cell lysate (50  $\mu$ g) from HeLa, HEK293T, and mouse TCMK-1 cells prepared using NETN lysis buffer.

*Antibody:* Affinity purified rabbit anti-53BP1 antibody A300-273A (lot A300-273A-5) used for WB at 0.1  $\mu$ g/ml.

*Detection:* Chemiluminescence with an exposure time of 3 minutes.