

# KAP-1 Antibody

Rabbit Polyclonal

Antigen Affinity Purified

Catalog No. A300-275A

Lot No. A300-275A-3

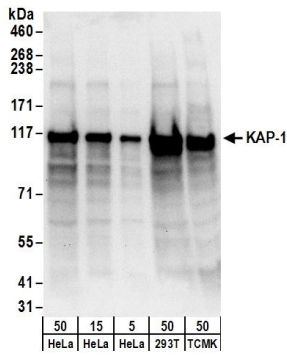
Protein ID NP\_005753.1

Gene ID 10155



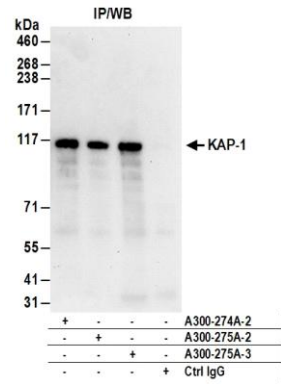
<b>APPLICATIONS</b>	WB, IP, IHC-P, IF								
<b>REACTIVITY TESTED</b>	Human, Mouse								
<b>PRESUMED REACTIVITY</b>	Based on 100% sequence identity, this antibody is predicted to react with Rat, Rabbit, Rhesus Monkey, Gorilla, Chimpanzee, White-tufted-ear marmoset, Crab-eating macaque and Northern white-cheeked gibbon.								
<b>ISOTYPE</b>	IgG								
<b>AMOUNT</b>	0.1 ml at 1 mg/ml								
<b>STORAGE/SHELF LIFE</b>	2 - 8° C / 1 year from date of receipt								
<b>PHYSICAL STATE</b>	Liquid								
<b>BUFFER</b>	Tris-citrate/phosphate buffer, pH 7 to 8 containing 0.09% Sodium Azide								
<b>ORIGIN</b>	USA								
<b>PRODUCTION PROCEDURES</b>	<p>Antibody was affinity purified using an epitope specific to KAP-1 immobilized on solid support.</p> <p>The epitope recognized by A300-275A maps to a region between residue 650 and 700 of human Tripartite Motif-Containing 28 using the numbering given in entry NP_005753.1 (GeneID 10155).</p> <p>Immunoglobulin concentration was determined by extinction coefficient: absorbance at 280 nm of 1.4 equals 1.0 mg of IgG.</p>								
<b>APPLICATIONS</b>	<p>Centrifuge tube to remove product from lid. Optimal working dilutions should be determined experimentally by the investigator. Prepare working dilution immediately before use.</p> <table><tr><td>Western Blot</td><td>1:500 - 1:10,000</td></tr><tr><td>Immunoprecipitation</td><td>2 to 10 µg/mg of lysate</td></tr><tr><td>Immunohistochemistry</td><td>1:1,000 to 1:5,000. Epitope retrieval with citrate buffer pH6.0 is recommended for FFPE tissue sections.</td></tr><tr><td>Immunofluorescence</td><td>1:500 to 1:2,500.</td></tr></table>	Western Blot	1:500 - 1:10,000	Immunoprecipitation	2 to 10 µg/mg of lysate	Immunohistochemistry	1:1,000 to 1:5,000. Epitope retrieval with citrate buffer pH6.0 is recommended for FFPE tissue sections.	Immunofluorescence	1:500 to 1:2,500.
Western Blot	1:500 - 1:10,000								
Immunoprecipitation	2 to 10 µg/mg of lysate								
Immunohistochemistry	1:1,000 to 1:5,000. Epitope retrieval with citrate buffer pH6.0 is recommended for FFPE tissue sections.								
Immunofluorescence	1:500 to 1:2,500.								
<b>APPLICATION NOTES</b>	IHC validation was performed using Immunohistochemistry Accessory Kit (Cat. # IHC-101).								
<b>IHC HUMAN CONTROLS</b>	Breast Carcinoma, Colon Carcinoma, Lung Adenocarcinoma, Ovarian Carcinoma, Prostate Carcinoma, Stomach Adenocarcinoma								
<b>ADDITIONAL INFO</b>	<p><a href="http://www.bethyl.com/product/A300-275A">http://www.bethyl.com/product/A300-275A</a></p> <p>Use the link above to view SDS, a current list of citations, and other product specific information.</p>								

# KAP-1 Antibody: A300-275A



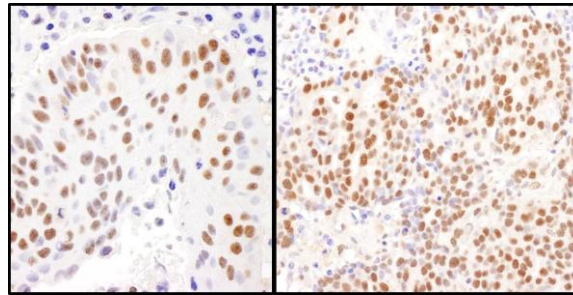
## Detection of Human and Mouse KAP-1 by Western Blot.

**Samples:** Whole cell lysate from HeLa (5, 15 and 50 µg), 293T and mouse TCMK-1 cells. **Antibodies:** Affinity purified rabbit anti-KAP-1 antibody A300-275A (lot A300-275A-3) used for WB at 0.1 µg/ml. **Detection:** Chemiluminescence with an exposure time of 10 seconds.



## Detection of Human KAP-1 by Western Blot of Immunoprecipitates.

**Samples:** Whole cell lysate (1 mg for IP; 20% of IP loaded) from HeLa cells. **Antibodies:** Affinity purified rabbit anti-KAP-1 antibody A300-275A (lot A300-275A-3) used for IP at 6 µg/mg lysate. KAP-1 was also immunoprecipitated by a previous lot of this antibody (lot A300-275A-2) and rabbit anti-KAP-1 antibody A300-274A. For blotting immunoprecipitated KAP-1, A300-275A was used at 1 µg/ml. **Detection:** Chemiluminescence with an exposure time of 10 seconds.



## Detection of Human KAP-1 by Immunohistochemistry.

**Sample:** FFPE sections of human lung carcinoma (left) and ovarian carcinoma (right). **Antibody:** Affinity purified rabbit anti-KAP-1 (Cat. No. A300-275A Lot3) used at a dilution of 1:5,000 (0.2µg/ml) and 1:1,000 (1µg/ml). **Detection:** DAB