

# KAP-1 Antibody

Rabbit Polyclonal

Antigen Affinity Purified

Protein ID NP\_005753.1

Catalog No. A300-275A-T

Gene ID 10155

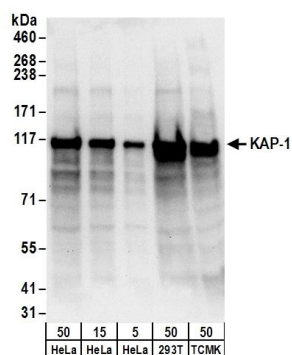
Lot No. A300-275A-T-3



<b>APPLICATIONS</b>	WB, IP, IHC-P, IF
<b>REACTIVITY TESTED</b>	Human, Mouse
<b>PRESUMED REACTIVITY</b>	Based on 100% sequence identity, this antibody is predicted to react with Rat, Rabbit, Rhesus Monkey, Gorilla, Chimpanzee, White-tufted-ear marmoset, Crab-eating macaque and Northern white-cheeked gibbon.
<b>ISOTYPE</b>	IgG
<b>AMOUNT</b>	20 µl (2 blots)
<b>STORAGE/SHELF LIFE</b>	2 - 8° C / 1 year from date of receipt
<b>PHYSICAL STATE</b>	Liquid
<b>BUFFER</b>	Tris-buffered Saline with 0.1% BSA containing 0.09% Sodium Azide
<b>ORIGIN</b>	USA
<b>PRODUCTION PROCEDURES</b>	Antibody was affinity purified using an epitope specific to KAP-1 immobilized on solid support.  The epitope recognized by A300-275A-T maps to a region between residue 650 and 700 of human Tripartite Motif-Containing 28 using the numbering given in entry NP_005753.1 (GeneID 10155).
<b>APPLICATIONS</b>	Centrifuge tube to remove product from lid. Optimal working dilutions should be determined experimentally by the investigator. Prepare working dilution immediately before use.  Western Blot                      1:1000  Immunoprecipitation              The antibody contained within A300-275A-T has been qualified for use in immunoprecipitation; however, we recommend using the alternative formulation of this antibody found as product A300-275A.  Immunohistochemistry              1:100 to 1:500. Epitope retrieval with citrate buffer pH6.0 is recommended for FFPE tissue sections.  Immunofluorescence              1:50 to 1:250
<b>ADDITIONAL INFO</b>	<a href="http://www.bethyl.com/product/A300-275A-T">http://www.bethyl.com/product/A300-275A-T</a>  Use the link above to view SDS, a current list of citations, and other product specific information.

## KAP-1 Antibody: A300-275A-T

---



### Detection of Human and Mouse KAP-1 by Western Blot.

*Samples:* Whole cell lysate from HeLa (5, 15, and 50  $\mu$ g), 293T and mouse TCMK-1 cells. *Antibody:* Affinity purified rabbit anti-KAP-1 antibody A300-275A-T used at 1:1000. *Detection:* Chemiluminescence with an exposure time of 10 seconds.