

HIF1- α Antibody

Rabbit Polyclonal

Antigen Affinity Purified Protein ID Q16665

Catalog No. A300-286A-M GeneID 3091

Lot No. A300-286A-M-7



APPLICATIONS	WB, IP, IHC, ICC-IF
SPECIES REACTIVITY	Human, Mouse
PRESUMED REACTIVITY	Based on 100% sequence identity, this antibody is predicted to react with Rat, Chicken and Bovine
AMOUNT	100 μ l (10 blots)
CONCENTRATION	100 μ g/ml
STORAGE/SHELF LIFE	2 - 8 $^{\circ}$ C / 1 year from date of receipt
PHYSICAL STATE	Liquid
BUFFER	Tris-buffered Saline containing 0.1% BSA and 0.09% Sodium Azide
ISOTYPE	IgG
ORIGIN	USA
PRODUCTION PROCEDURES	Antibody was affinity purified using an epitope specific to HIF1- α immobilized on solid support.

The epitope recognized by A300-286A-M maps to a region between residues 775 and the C-terminus (residue 826) of human hypoxia-inducible factor 1, α subunit using the numbering given in Swiss-Prot entry Q16665 (GeneID 3091).

APPLICATIONS Centrifuge tube to remove product from lid. Optimal working dilutions should be determined experimentally by the investigator. Prepare working dilution immediately before use.

Western Blot 1:1000

Immunoprecipitation The antibody contained within A300-286A-M has been qualified for use in immunoprecipitation; however, we recommend using the alternative formulation of this antibody found as product A300-286A.

Immunohistochemistry 1:50 to 1:250. Epitope retrieval with citrate buffer pH6.0 for 20 minutes using a pressure cooker is recommended for FFPE tissue sections.

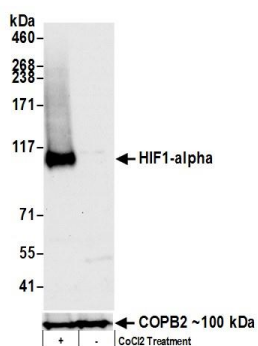
Immunofluorescence (ICC) 1:50 - 1:250. Epitope retrieval with citrate buffer pH 6.0 for 20 minutes using a pressure cooker is recommended for FFPE tissue sections.

APPLICATION NOTES Western blot of immunoprecipitates performed using Normal Pig Serum (Cat. No. S100-020), Goat anti-Rabbit Light Chain HRP Conjugate (Cat. No. A120-113P) and 4-8% SDS-PAGE (link to IP-western blot protocol in Additional Info section below).

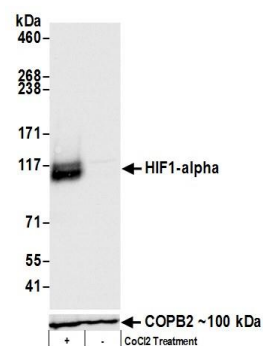
ADDITIONAL INFO Western blot of lysates performed using standard western blot reagents and 4-8% SDS-PAGE. <https://www.bethyl.com/product/A300-286A-M>

Use the link above to view SDS, a current list of citations, and other product specific information. IP-western blot protocol https://www.bethyl.com/content/protocol_IP_WB

This document certifies that this product has met all of the quality control standards defined by Bethyl Laboratories, Inc.
Eric McIntush, PhD | Chief Scientific Officer Date: January 21, 2020



Detection of human HIF1 alpha by western blot. Samples: Whole cell lysate (50 μ g) from HepG2 cells that were either treated with 200 μ M cobalt chloride (+) or mock treated (-). **Antibodies:** Affinity purified rabbit anti-HIF1 alpha antibody A300-286A-M (lot number A300-286A-M-7) used for WB at 1:1000. **Detection:** Chemiluminescence with exposure times of 10 seconds. Lower Panel: Rabbit anti-COPB2 antibody (A304-523A).



Detection of mouse HIF1 alpha by western blot. Samples: Whole cell lysate (50 μ g) from NIH3T3 cells that were either treated with 200 μ M cobalt chloride (+) or mock treated (-). **Antibodies:** Affinity purified rabbit anti-HIF1 alpha antibody A300-286A-M (lot number A300-286A-M-7) used for WB at 1:1000. **Detection:** Chemiluminescence with exposure times of 3 seconds. Lower Panel: Rabbit anti-COPB2 antibody (A304-523A).