

# hSET1 Antibody

Rabbit Polyclonal

Antigen Affinity Purified	RefSeq ID	NP_055527.1
Catalog No. A300-289A	Uniprot ID	O15047
Lot No. 8	GeneID	9739

---

<b>APPLICATIONS</b>	WB, IP, IHC
<b>SPECIES REACTIVITY</b>	Human, Mouse
<b>AMOUNT</b>	100 µl
<b>CONCENTRATION</b>	1000 µg/ml
<b>STORAGE/SHELF LIFE</b>	2 – 8°C / 1 year from date of receipt
<b>PHYSICAL STATE</b>	Liquid
<b>BUFFER</b>	Tris-citrate/phosphate buffer, pH 7 to 8 containing 0.09% Sodium Azide
<b>ISOTYPE</b>	IgG
<b>ORIGIN</b>	USA
<b>PRODUCTION PROCEDURES</b>	Antibody was affinity purified using an epitope specific to hSET1 immobilized on solid support.

The epitope recognized by A300-289A maps to a region between residues 1200 and 1250 of human hSET1 (KIAA0339) using the numbering given in TrEMBL entry O15047 (GeneID 9739).

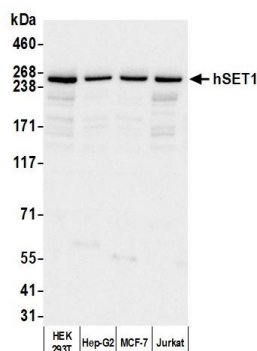
Immunoglobulin concentration was determined by extinction coefficient: absorbance at 280 nm of 1.4 equals 1.0 mg of IgG.

**APPLICATIONS** Centrifuge tube to remove product from lid. Optimal working dilutions should be determined experimentally by the investigator. Prepare working dilution immediately before use.

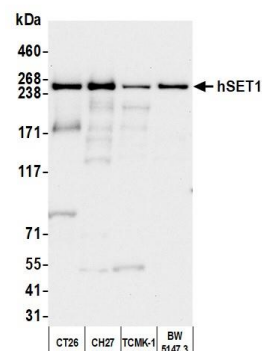
Western Blot	1:10,000 – 1:25,000
Immunoprecipitation	2 – 10 µg/mg lysate
Immunohistochemistry	1:1,000 to 1:5,000. Epitope retrieval with citrate buffer pH6.0 is recommended for FFPE tissue sections.

**ADDITIONAL INFO** <https://www.fortislife.com/p/A300-289A>  
Use the link above to view SDS, a current list of citations, and other product specific information.

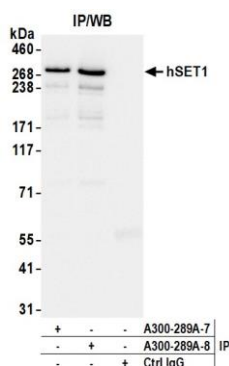
This document certifies that this product has met all of the quality control standards defined by Bethyl Laboratories, Inc.  
Michael Spencer, PhD Date: April 17, 2023



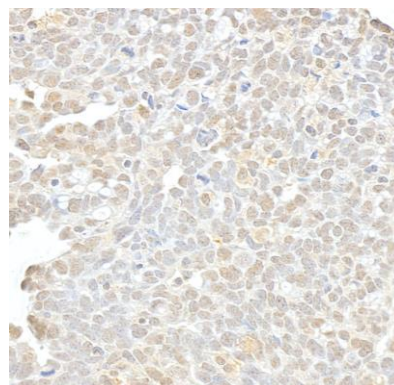
**Detection of human hSET1 by western blot.** *Samples:* Whole cell lysate (25  $\mu$ g) from HEK293T, Hep-G2, MCF-7, and Jurkat cells prepared using NETN lysis buffer. *Antibody:* Affinity purified rabbit anti-hSET1 antibody (A300-289A lot 8) used for WB at 0.04  $\mu$ g/ml. *Detection:* Chemiluminescence with an exposure time of 10 seconds.



**Detection of mouse hSET1 by western blot.** *Samples:* Whole cell lysate (25  $\mu$ g) from CT26, CH27, TCMK-1, and BW5147.3 cells prepared using NETN lysis buffer. *Antibody:* Affinity purified rabbit anti-hSET1 antibody (A300-289A lot 8) used for WB at 0.04  $\mu$ g/ml. *Detection:* Chemiluminescence with an exposure time of 30 seconds.



**Detection of human hSET1 by western blot of immunoprecipitates.** *Samples:* Whole cell lysate (1 mg for IP; 10% of IP loaded) from HEK293T cells prepared using NETN lysis buffer. *Antibodies:* Affinity purified rabbit anti-hSET1 antibody (A300-289A lot 8) used for IP at 6  $\mu$ g per reaction. hSET1 was also immunoprecipitated by a previous lot of this antibody (A300-289A lot 7). For blotting immunoprecipitated hSET1, A300-289A was used at 0.1  $\mu$ g/ml. *Detection:* Chemiluminescence with an exposure time of 3 seconds.



**Detection of Human hSET1 by Immunohistochemistry.** *Sample:* FFPE section of human ovarian carcinoma. *Antibody:* Affinity purified rabbit anti-hSET1 (Cat. No. A300-289A Lot 8) used at a dilution of 1:1,000 (1  $\mu$ g/ml). *Detection:* DAB