

FUS Antibody

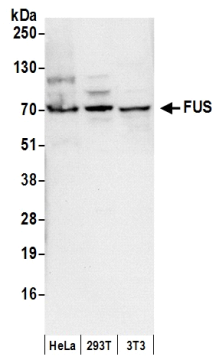
Rabbit Polyclonal

Antigen Affinity Purified Protein ID P35637
Catalog No. A300-293A Gene ID 2521
Lot No. A300-293A-3



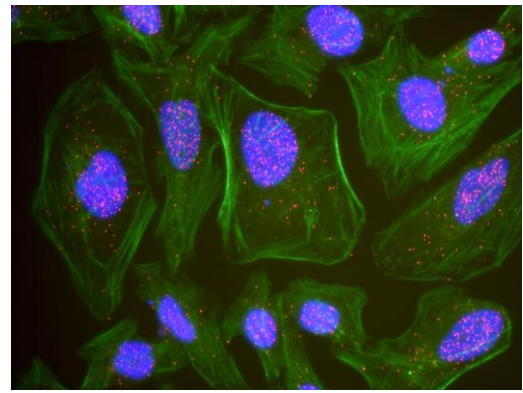
APPLICATIONS	WB, IP, IHC-P, IF, PLA										
REACTIVITY TESTED	Human, Mouse										
PRESUMED REACTIVITY	Based on 100% sequence identity, this antibody is predicted to react with Rat, Bovine, Dog, Rabbit, Pig, Panda, Orangutan, Rhesus Monkey, Gorilla, Chimpanzee, Duckbill platypus, Tasmanian devil, White-tufted-ear marmoset, African elephant, Chinese hamster and Northern white-cheeked gibbon.										
ISOTYPE	IgG										
AMOUNT	100 µl at 1 mg/ml										
STORAGE/SHELF LIFE	2 - 8° C / 1 year from date of receipt										
PHYSICAL STATE	Liquid										
BUFFER	Tris-citrate/phosphate buffer, pH 7 to 8 containing 0.09% Sodium Azide										
ORIGIN	USA										
PRODUCTION PROCEDURES	<p>Antibody was affinity purified using an epitope specific to FUS immobilized on solid support.</p> <p>The epitope recognized by A300-293A maps to a region between residues 400 and 450 of human fusion (involved in t(12;16) in malignant liposarcoma) using the numbering given in SwissProt entry P35637 (GeneID 2521).</p> <p>Immunoglobulin concentration was determined by extinction coefficient: absorbance at 280 nm of 1.4 equals 1.0 mg of IgG.</p>										
APPLICATIONS	<p>Centrifuge tube to remove product from lid. Optimal working dilutions should be determined experimentally by the investigator. Prepare working dilution immediately before use.</p> <table><tr><td>Western Blot</td><td>1:2,000 - 1:10,000</td></tr><tr><td>Immunoprecipitation</td><td>2 to 10 µg/mg lysate</td></tr><tr><td>Immunohistochemistry</td><td>1:1,000 to 1:10,000. Epitope retrieval with citrate buffer pH6.0 is recommended for FFPE tissue sections.</td></tr><tr><td>Immunofluorescence</td><td>1:500 - 1:5,000</td></tr><tr><td>Proximity Ligation Assay</td><td>1:1,000 - 1:20,000</td></tr></table>	Western Blot	1:2,000 - 1:10,000	Immunoprecipitation	2 to 10 µg/mg lysate	Immunohistochemistry	1:1,000 to 1:10,000. Epitope retrieval with citrate buffer pH6.0 is recommended for FFPE tissue sections.	Immunofluorescence	1:500 - 1:5,000	Proximity Ligation Assay	1:1,000 - 1:20,000
Western Blot	1:2,000 - 1:10,000										
Immunoprecipitation	2 to 10 µg/mg lysate										
Immunohistochemistry	1:1,000 to 1:10,000. Epitope retrieval with citrate buffer pH6.0 is recommended for FFPE tissue sections.										
Immunofluorescence	1:500 - 1:5,000										
Proximity Ligation Assay	1:1,000 - 1:20,000										
APPLICATION NOTES	IHC validation was performed using Immunohistochemistry Accessory Kit (Cat. # IHC-101).										
IHC HUMAN CONTROLS	Breast Carcinoma, Colon Carcinoma, Lung Adenocarcinoma, Ovarian Carcinoma, Prostate Carcinoma, Skin Squamous Cell Carcinoma										
IHC MOUSE CONTROLS	Renal Cell Carcinoma, Squamous Cell Carcinoma, Teratoma										
ADDITIONAL INFO	<p>http://www.bethyl.com/product/A300-293A</p> <p>Use the link above to view SDS, a current list of citations, and other product specific information.</p>										

FUS Antibody: A300-293A



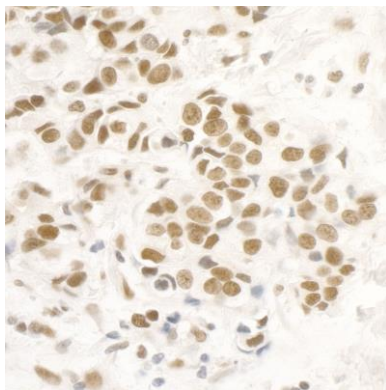
Detection of Human and Mouse FUS by Western Blot.

Samples: Whole cell lysate (50 µg) from HeLa, 293T, and mouse NIH3T3 cells prepared using NETN lysis buffer. **Antibody:** Affinity purified rabbit anti-FUS antibody A300-293A (lot A300-293A-3) used for WB at 0.1 µg/ml. **Detection:** Chemiluminescence with an exposure time of 3 seconds.

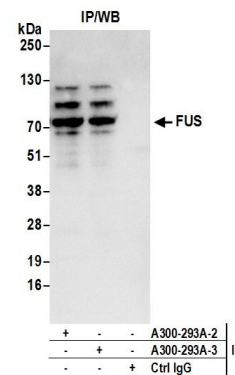


This antibody is qualified for the Proximity Ligation Assay (PLA).

PLA uses paired antibodies, so please refer to the PLA page of our website for specific imaging obtained by pairing this antibody with other qualified antibodies. The above image shows representative results for PLA using three color fluorescence, including DAPI stained nuclei (blue), phalloidin stained cytoplasmic F-actin (green), and PLA positive signal (red).

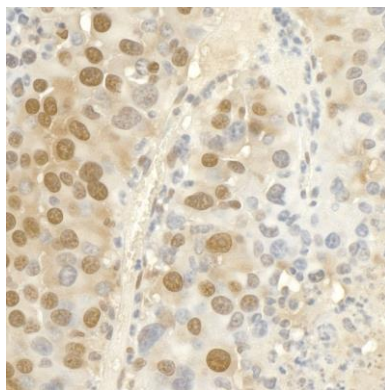


Detection of Human FUS by Immunohistochemistry. **Sample:** FFPE section of human breast carcinoma. **Antibody:** Affinity purified rabbit anti-FUS (Cat. No. A300-293A Lot3) used at a dilution of 1:5,000 (0.2µg/ml). **Detection:** DAB



Detection of Human FUS by Western Blot of Immunoprecipitates.

Samples: Whole cell lysate (0.5 or 1.0 mg per IP reaction; 20% of IP loaded) from 293T cells prepared using NETN lysis buffer. **Antibodies:** Affinity purified rabbit anti-FUS antibody A300-293A (lot A300-293A-3) used for IP at 6 µg per reaction. FUS was also immunoprecipitated by a previous lot of this antibody A300-293A-2. For blotting immunoprecipitated FUS, A300-293A was used at 1 µg/ml. **Detection:** Chemiluminescence with an exposure time of 3 seconds.



Detection of Mouse FUS by Immunohistochemistry. *Sample:* FFPE section of mouse renal cell carcinoma. *Antibody:* Affinity purified rabbit anti-FUS (Cat. No. A300-293A Lot3) used at a dilution of 1:1,000 (1 μ g/ml). *Detection:* DAB