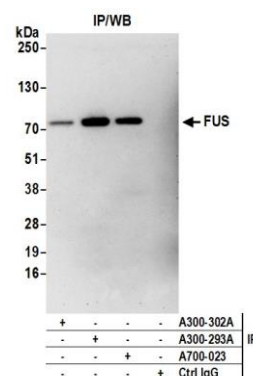


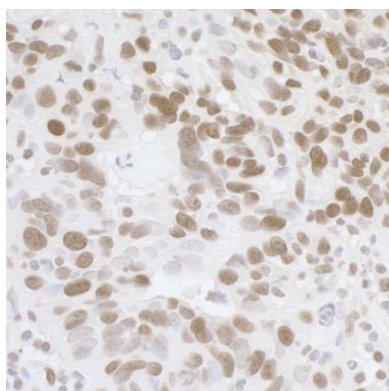
#### Detection of human and mouse FUS by western blot.

**Samples:** Whole cell lysate (50 µg) from Hep-G2, HeLa, HEK293T, and mouse NIH 3T3 cells prepared using NETN lysis buffer. **Antibody:** Affinity purified rabbit anti-FUS antibody A300-302A (lot A300-302A-4) used for WB at 0.04 µg/ml. **Detection:** Chemiluminescence with an exposure time of 10 seconds.



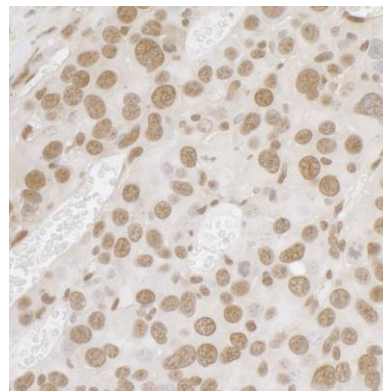
#### Detection of human FUS by western blot of immunoprecipitates.

**Samples:** Whole cell lysate (1.0 mg per IP reaction; 20% of IP loaded) from HEK293T cells prepared using NETN lysis buffer. **Antibodies:** Affinity purified rabbit anti-FUS antibody A300-302A (lot A300-293A-4) used for IP at 3 µg per reaction. FUS was also immunoprecipitated by rabbit anti-FUS recombinant monoclonal antibody [BLR023E] (A700-023) and rabbit anti-FUS antibody A300-293A. For blotting immunoprecipitated FUS, A700-023 was used at 1:1000. **Detection:** Chemiluminescence with an exposure time of 3 minutes.



#### Detection of human FUS by immunohistochemistry.

**Sample:** FFPE section of human ovarian carcinoma. **Antibody:** Affinity purified rabbit anti-FUS (Cat. No. A300-302A Lot4) used at a dilution of 1:1,000 (1 µg/ml). **Detection:** DAB



#### Detection of mouse FUS by immunohistochemistry.

**Sample:** FFPE section of mouse renal cells carcinoma. **Antibody:** Affinity purified rabbit anti-FUS (Cat. No. A300-302A Lot4) used at a dilution of 1:1,000 (1 µg/ml). **Detection:** DAB