

FUS Antibody

Rabbit Polyclonal

Antigen Affinity Purified Protein ID P35637

Catalog No. A300-302A-T GenelD 2521

Lot No. A300-302A-T-4

APPLICATIONS	WB, IP, IHC
SPECIES REACTIVITY	Human, Mouse
PRESUMED REACTIVITY	Based on 100% sequence identity, this antibody is predicted to react with Bovine
AMOUNT	10 µl
CONCENTRATION	1000 µg/ml
STORAGE/SHELF LIFE	2 – 8°C / 1 year from date of receipt
PHYSICAL STATE	Liquid
BUFFER	Tris-citrate/phosphate buffer, pH 7 to 8 containing 0.09% Sodium Azide
ISOTYPE	IgG
ORIGIN	USA
PRODUCTION PROCEDURES	Antibody was affinity purified using an epitope specific to FUS immobilized on solid support.

The epitope recognized by A300-302A-T maps to a region between residues 1 and 50 of human fusion (involved in t(12;16) in malignant liposarcoma) using the numbering given in SwissProt entry P35637 (GenelD 2521).

APPLICATIONS Centrifuge tube to remove product from lid. Optimal working dilutions should be determined experimentally by the investigator. Prepare working dilution immediately before use.

Western Blot 1:2,000 – 1:10,000

Immunoprecipitation 2 – 10 µg/mg lysate

Immunohistochemistry 1:500 – 1:2,000. Epitope retrieval with citrate buffer pH 6.0 is recommended for FFPE tissue sections.

ADDITIONAL INFO <https://www.bethyl.com/product/A300-302A-T>

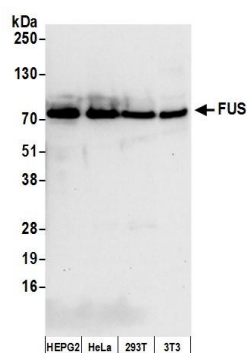
Use the link above to view SDS, a current list of citations, and other product specific information.

IP-western blot protocol: https://www.bethyl.com/content/protocol_IP_WB

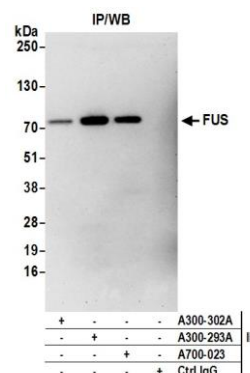
This document certifies that this product has met all of the quality control standards defined by Bethyl Laboratories, Inc.

Michael Spencer, PhD

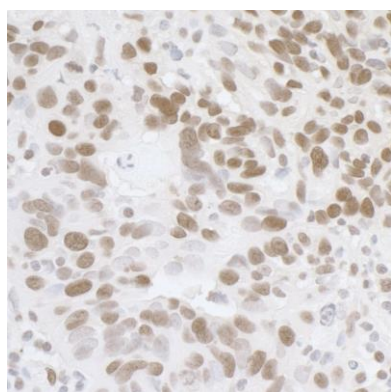
Date: June 6, 2022



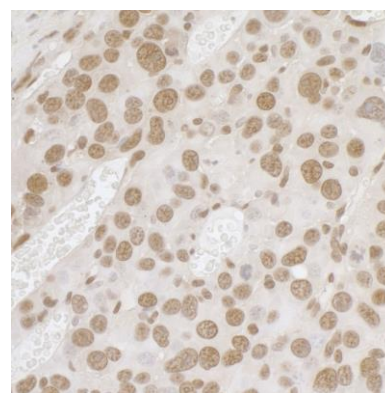
Detection of human and mouse FUS by western blot.
Samples: Whole cell lysate (50 µg) from Hep-G2, HeLa, HEK293T, and mouse NIH 3T3 cells prepared using NETN lysis buffer. *Antibody:* Affinity purified rabbit anti-FUS antibody A300-302A (lot A300-302A-4) used for WB at 0.04 µg/ml. *Detection:* Chemiluminescence with an exposure time of 10 seconds.



Detection of human FUS by western blot of immunoprecipitates. *Samples:* Whole cell lysate (1.0 mg per IP reaction; 20% of IP loaded) from HEK293T cells prepared using NETN lysis buffer. *Antibodies:* Affinity purified rabbit anti-FUS antibody A300-302A (lot A300-293A-4) used for IP at 3 µg per reaction. FUS was also immunoprecipitated by rabbit anti-FUS recombinant monoclonal antibody [BLR023E] (A700-023) and rabbit anti-FUS antibody A300-293A. For blotting immunoprecipitated FUS, A700-023 was used at 1:1000. *Detection:* Chemiluminescence with an exposure time time of 3 minutes.



Detection of human FUS by immunohistochemistry.
Sample: FFPE section of human ovarian carcinoma.
Antibody: Affinity purified rabbit anti-FUS (Cat. No. A300-302A Lot4) used at a dilution of 1:1,000 (1 µg/ml).
Detection: DAB



Detection of mouse FUS by immunohistochemistry.
Sample: FFPE section of mouse renal cells carcinoma.
Antibody: Affinity purified rabbit anti-FUS (Cat. No. A300-302A Lot4) used at a dilution of 1:1,000 (1 µg/ml).
Detection: DAB