

RFC4 Antibody

Rabbit Polyclonal

Antigen Affinity Purified

Protein ID NP_002907.1

Catalog No. A300-321A

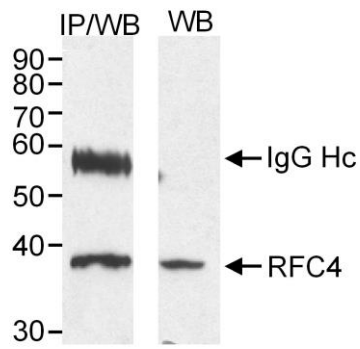
GeneID 5984

Lot No. A300-321A-1



APPLICATIONS	WB
SPECIES REACTIVITY	Human
AMOUNT	100 μ l
CONCENTRATION	1000 μ g/ml
STORAGE/SHELF LIFE	2 - 8° C / 1 year from date of receipt
PHYSICAL STATE	Liquid
BUFFER	Tris-citrate/phosphate buffer, pH 7 to 8 containing 0.09% Sodium Azide
ISOTYPE	IgG
ORIGIN	USA
PRODUCTION PROCEDURES	Antibody was affinity purified using an epitope specific to RFC4 immobilized on solid support. The epitope recognized by A300-321A maps to a region between residues 1 and 50 of human Replication Factor C subunit 4 using the numbering given in entry NP_002907.1 (GeneID 5984). Immunoglobulin concentration was determined by extinction coefficient: absorbance at 280 nm of 1.4 equals 1.0 mg of IgG.
APPLICATIONS	Centrifuge tube to remove product from lid. Optimal working dilutions should be determined experimentally by the investigator. Prepare working dilution immediately before use. Western Blot 1:1,000 - 1:10,000
APPLICATION NOTES	Western blot of lysates performed using standard western blot reagents and 4-20% SDS-PAGE.
ADDITIONAL INFO	https://www.bethyl.com/product/A300-321A Use the link above to view SDS, a current list of citations, and other product specific information.

This document certifies that this product has met all of the quality control standards defined by Bethyl Laboratories, Inc.
Eric McIntush, PhD | Chief Scientific Officer Date: June 21, 2019



Detection of human RFC4 (aka RFC37) by western blot and immunoprecipitation. *Sample:* Nuclear extract (20 μ g for WB; 300 μ g for IP) from HeLa cells. *Antibody:* Affinity purified rabbit anti-RFC4 (Cat. No. A300-321A) used at 0.5 μ g/ml for WB and 2 μ g/300 μ g lysate for IP. *Detection:* Chemiluminescence with 10 sec. exposure.