

PBEF Antibody

Rabbit Polyclonal

Antigen Affinity Purified

Catalog No. A300-372A

Lot No. A300-372A-3

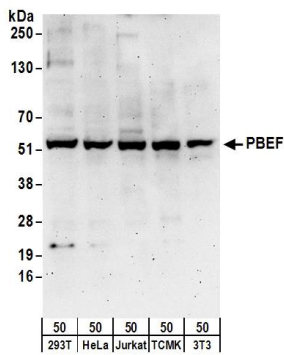
Protein ID P43490

Gene ID 10135

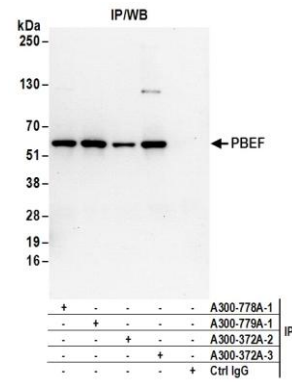


APPLICATIONS	WB, IHC-P, IF						
REACTIVITY TESTED	Human, Mouse, Dog						
PRESUMED REACTIVITY	Based on 100% sequence identity, this antibody is predicted to react with Rat, Zebrafish, X. laevis, X. tropicalis, Chicken, Turkey, Bovine, Horse, Rabbit, Guinea pig_10141, Pig, Panda, Orangutan, Rhesus Monkey, Gorilla, Chimpanzee, West Indian ocean coelacanth, Common carp and Spotted green pufferfish.						
ISOTYPE	IgG						
AMOUNT	0.1 ml at 1 mg/ml						
STORAGE/SHELF LIFE	2 - 8° C / 1 year from date of receipt						
PHYSICAL STATE	Liquid						
BUFFER	Tris-citrate/phosphate buffer, pH 7 to 8 containing 0.09% Sodium Azide						
ORIGIN	USA						
PRODUCTION PROCEDURES	<p>Antibody was affinity purified using an epitope specific to PBEF immobilized on solid support.</p> <p>The epitope recognized by A300-372A maps to a region between residues 400 and 450 of human pre-B-cell colony enhancing factor 1 using the numbering given in Swiss-Prot entry P43490 (GeneID 10135).</p> <p>Immunoglobulin concentration was determined by extinction coefficient: absorbance at 280 nm of 1.4 equals 1.0 mg of IgG.</p>						
APPLICATIONS	<p>Centrifuge tube to remove product from lid. Optimal working dilutions should be determined experimentally by the investigator. Prepare working dilution immediately before use.</p> <table><tr><td>Western Blot</td><td>1:1,000 - 1:10,000</td></tr><tr><td>Immunohistochemistry</td><td>1:500 to 1:2,000. Epitope retrieval with citrate buffer pH6.0 is recommended for FFPE tissue sections.</td></tr><tr><td>Immunofluorescence</td><td>1:250 to 1:1,000</td></tr></table>	Western Blot	1:1,000 - 1:10,000	Immunohistochemistry	1:500 to 1:2,000. Epitope retrieval with citrate buffer pH6.0 is recommended for FFPE tissue sections.	Immunofluorescence	1:250 to 1:1,000
Western Blot	1:1,000 - 1:10,000						
Immunohistochemistry	1:500 to 1:2,000. Epitope retrieval with citrate buffer pH6.0 is recommended for FFPE tissue sections.						
Immunofluorescence	1:250 to 1:1,000						
APPLICATION NOTES	IHC validation was performed using Immunohistochemistry Accessory Kit (Cat. # IHC-101).						
IHC HUMAN CONTROLS	Placenta						
ADDITIONAL INFO	<p>http://www.bethyl.com/product/A300-372A</p> <p>Use the link above to view SDS, a current list of citations, and other product specific information.</p>						

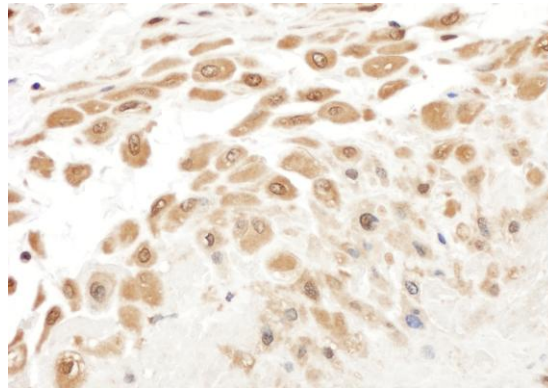
PBEF Antibody: A300-372A



Detection of Human and Mouse PBEF by Western Blot. *Samples:* Whole cell lysate (50 µg) from 293T, HeLa, Jurkat, mouse TCMK-1, and mouse NIH3T3 cells. *Antibodies:* Affinity purified rabbit anti-PBEF antibody A300-372A (lot A300-372A-3) used for WB at 0.1 µg/ml. *Detection:* Chemiluminescence with an exposure time of 3 minutes.



Detection of Human PBEF by Western Blot of Immunoprecipitates. *Samples:* Whole cell lysate (1 mg for IP; 20% of IP loaded) from 293T cells. *Antibodies:* Affinity purified rabbit anti-PBEF antibody A300-372A (lot A300-372A-3) used for IP at 6 µg/mg lysate. PBEF was also immunoprecipitated by anti-PBEF/Visfatin antibodies A300-778A, A300-779A, and a previous lot (lot A300-372A-2) of this antibody. For blotting immunoprecipitated PBEF, A300-372A was used at 1 µg/ml. *Detection:* Chemiluminescence with an exposure time of 10 seconds.



Detection of Human PBEF by Immunohistochemistry. *Sample:* FFPE section of human placental fetal membrane. *Antibody:* Affinity purified rabbit anti-PBEF (Cat. No. A300-372A Lot3) used at a dilution of 1:1,000 (1µg/ml). *Detection:* DAB