

MLL1 Antibody

Rabbit Polyclonal

Antigen Affinity Purified

Protein ID Q03164

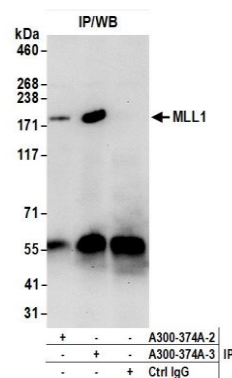
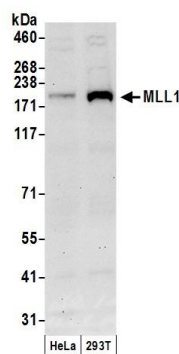
Catalog No. A300-374A

GeneID 4297

Lot No. A300-374A-3

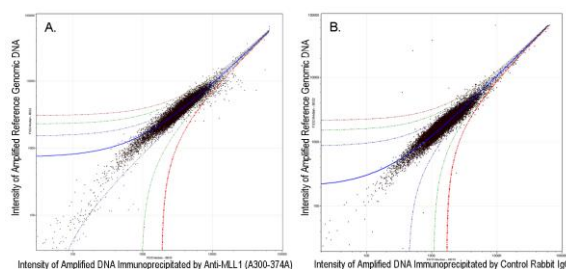


APPLICATIONS	WB, IP, ChIP, ChIP-chip
SPECIES REACTIVITY	Human
PRESUMED REACTIVITY	Based on 100% sequence identity, this antibody is predicted to react with Mouse
ISOTYPE	IgG
AMOUNT	100 µl at 1 mg/ml
STORAGE/SHELF LIFE	2 - 8° C / 1 year from date of receipt
PHYSICAL STATE	Liquid
BUFFER	Tris-citrate/phosphate buffer, pH 7 to 8 containing 0.09% Sodium Azide
ORIGIN	USA
PRODUCTION PROCEDURES	Antibody was affinity purified using an epitope specific to MLL1 immobilized on solid support. The epitope recognized by A300-374A maps to a region between residues 2725 and 2775 of human myeloid/lymphoid or mixed-lineage leukemia 1 using the number given in Swiss-Prot entry Q03164 (GeneID 4297). The epitope is found in the C-terminal 180 kDa fragment generated by proteolytic cleavage. The epitope is found in isoform 14P-18B of MLL1. Immunoglobulin concentration was determined by extinction coefficient: absorbance at 280 nm of 1.4 equals 1.0 mg of IgG.
APPLICATIONS	Centrifuge tube to remove product from lid. Optimal working dilutions should be determined experimentally by the investigator. Prepare working dilution immediately before use. Western Blot 1:500 - 1:2,500 Immunoprecipitation 2 - 10 µg/mg lysate ChIP 1 - 5 µg. Previous lots of this antibody have performed in this application. ChIP-chip 10 µg. Previous lots of this antibody have performed in this application.
APPLICATION NOTES	Western blot of immunoprecipitates performed using ReliaBLOT® Reagents (Cat. No. WB120) and 3-8% SDS-PAGE. Western blot of lysates performed using standard western blot reagents and 3-8% SDS-PAGE.
ADDITIONAL INFO	http://www.bethyl.com/product/A300-374A Use the link above to view SDS, a current list of citations, and other product specific information.



Detection of human MLL1 by western blot. *Samples:* Whole cell lysate (50 µg) from HeLa and 293T cells prepared using NETN lysis buffer. *Antibody:* Affinity purified rabbit anti-MLL1 antibody A300-374A (lot A300-374A-3) used for WB at 1 µg/ml. *Detection:* Chemiluminescence with an exposure time of 30 seconds.

Detection of human MLL1 by western blot of immunoprecipitates. *Samples:* Whole cell lysate (0.5 or 1.0 mg per IP reaction; 20% of IP loaded) from 293T cells prepared using NETN lysis buffer. *Antibodies:* Affinity purified rabbit anti-MLL1 antibody A300-374A (lot A300-374A-3) used for IP at 6 µg per reaction. MLL1 was also immunoprecipitated by a previous lot of this antibody A300-374A-2. For blotting immunoprecipitated MLL1, A300-374A was used at 1 µg/ml. *Detection:* Chemiluminescence with an exposure time of 30 seconds.



ChIP-chip scatter plot of anti-MLL1 (A300-374A) enriched DNA binding sites versus input reference DNA. A. 10 µg of A300-374A was used to immunoprecipitate chromatin from K562 cells according to Ren et al (Genes Dev. 2002 16: 245-256). immunoprecipitated DNA and reference DNA were amplified via ligation-mediated PCR and the products labeled with fluorescent dUTPs. The labeled ChIP and reference DNA were pooled, hybridized to a DNA microarray, and analyzed. Data points below the +3 SD curve (red line) represent significantly enriched binding sites. B. As a control, a similar experiment was performed using normal rabbit IgG. Compared to the anti-MLL1 ChIP, normal rabbit IgG showed little enrichment.