

MLL1 Antibody

Rabbit Polyclonal

Antigen Affinity Purified Protein ID Q03164

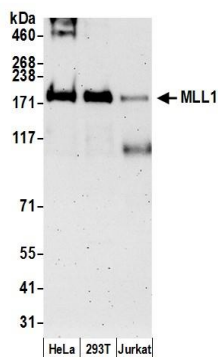
Catalog No. A300-374A-M GeneID 4297

Lot No. A300-374A-M-5



APPLICATIONS	WB, IP, ChIP, ChIP-chip
SPECIES REACTIVITY	Human
PRESUMED REACTIVITY	Based on 100% sequence identity, this antibody is predicted to react with Mouse
AMOUNT	100 µl (10 blots)
CONCENTRATION	100 µg/ml
STORAGE/SHELF LIFE	2 - 8° C / 1 year from date of receipt
PHYSICAL STATE	Liquid
BUFFER	Tris-buffered Saline containing 0.1% BSA and 0.09% Sodium Azide
ISOTYPE	IgG
ORIGIN	USA
PRODUCTION PROCEDURES	Antibody was affinity purified using an epitope specific to MLL1 immobilized on solid support. The epitope recognized by A300-374A-M maps to a region between residues 2725 and 2775 of human myeloid/lymphoid or mixed-lineage leukemia 1 using the number given in Swiss-Prot entry Q03164 (GeneID 4297). The epitope is found in the C-terminal 180 kDa fragment generated by proteolytic cleavage. The epitope is found in isoform 14P-18B of MLL1.
APPLICATIONS	Centrifuge tube to remove product from lid. Optimal working dilutions should be determined experimentally by the investigator. Prepare working dilution immediately before use. Western Blot 1:1000 Immunoprecipitation The antibody contained within A300-374A-M has been qualified for use in immunoprecipitation; however, we recommend using the alternative formulation of this antibody found as product A300-374A. ChIP The antibody contained within A300-374A-M has been qualified for use in chromatin immunoprecipitation; however, we recommend using the alternative formulation of this antibody found as product A300-374A. ChIP-chip The antibody contained within A300-374A-M has been qualified for use in ChIP-chip however, we recommend using the alternative formulation of this antibody found as product A300-374A.
APPLICATION NOTES	Western blot of immunoprecipitates performed using Normal Pig Serum (Cat. No. S100-020), Goat anti-Rabbit Light Chain HRP Conjugate (Cat. No. A120-113P) and 3-8% SDS-PAGE (link to IP-western blot protocol in Additional Info section below).
ADDITIONAL INFO	Western blot of lysates performed using standard western blot reagents and 3-8% SDS-PAGE. https://www.bethyl.com/product/A300-374A-M Use the link above to view SDS, a current list of citations, and other product specific information. IP-western blot protocol https://www.bethyl.com/content/protocol_IP_WB

This document certifies that this product has met all of the quality control standards defined by Bethyl Laboratories, Inc.
Eric McIntush, PhD | Chief Scientific Officer Date: June 24, 2019



Detection of human MLL1 by western blot. *Samples:* Whole cell lysate (50 µg) from HeLa, HEK293T, and Jurkat cells prepared using NETN lysis buffer. *Antibody:* Affinity purified rabbit anti-MLL1 antibody A300-374A-M (lot A300-374A-M-5) used for WB at 1:1000. *Detection:* Chemiluminescence with an exposure time of 3 minutes.