

Bcl11b Antibody

Rabbit Polyclonal

Antigen Affinity Purified

Protein ID Q9C0K0

Catalog No. A300-384A

GeneID 64919

Lot No. A300-384A-1



APPLICATIONS	WB, IP, IHC
SPECIES REACTIVITY	Human
AMOUNT	100 µl
CONCENTRATION	1000 µg/ml
STORAGE/SHELF LIFE	2 - 8° C / 1 year from date of receipt
PHYSICAL STATE	Liquid
BUFFER	Tris-citrate/phosphate buffer, pH 7 to 8 containing 0.09% Sodium Azide
ISOTYPE	IgG
ORIGIN	USA
PRODUCTION PROCEDURES	Antibody was affinity purified using an epitope specific to Bcl11b immobilized on solid support.

The epitope recognized by A300-384A maps to a region between residues 500 and 550 of human B-cell CLL/lymphoma 11B using the numbering given in entry NP_612808.1 (GeneID 64919).

Immunoglobulin concentration was determined by extinction coefficient: absorbance at 280 nm of 1.4 equals 1.0 mg of IgG.

APPLICATIONS Centrifuge tube to remove product from lid. Optimal working dilutions should be determined experimentally by the investigator. Prepare working dilution immediately before use.

Western Blot 1:5,000 – 1:15,000

Immunoprecipitation 1 – 5 µg/mg lysate

Immunohistochemistry 1:500 – 1:2,000. Epitope retrieval with citrate buffer pH 6.0 is recommended for FFPE tissue sections.

APPLICATION NOTES Western blot of immunoprecipitates performed using Normal Pig Serum (Cat. No. S100-020), Goat anti-Rabbit Light Chain HRP Conjugate (Cat. No. A120-113P) and 4-8% SDS-PAGE (link to IP-western blot protocol in Additional Info section below).

IHC HUMAN CONTROLS Western blot of lysates performed using standard western blot reagents and 4-8% SDS-PAGE. Laryngeal Squamous Cell Carcinoma, Ovarian Carcinoma, Skin Basal Cell Carcinoma, Skin Squamous Cell Carcinoma, Stomach Adenocarcinoma, Testicular Seminoma

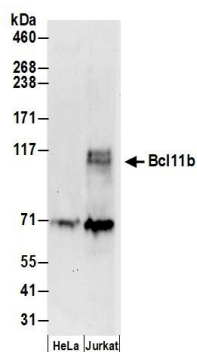
ADDITIONAL INFO <https://www.bethyl.com/product/A300-384A>

Use the link above to view SDS, a current list of citations, and other product specific information.

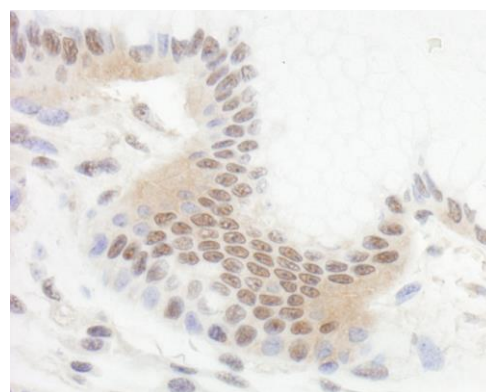
IP-western blot protocol: https://www.bethyl.com/content/protocol_IP_WB

This document certifies that this product has met all of the quality control standards defined by Bethyl Laboratories, Inc.
Eric McIntush, PhD | Chief Scientific Officer

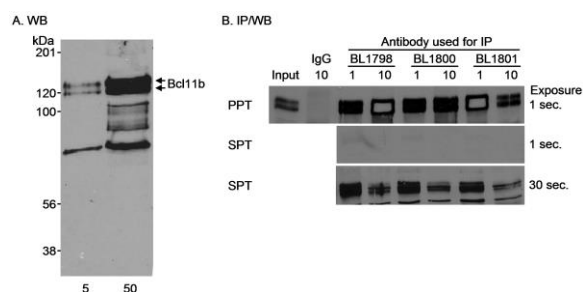
Date: June 21, 2019



Detection of human Bcl11b by western blot. *Samples:* Whole cell lysate (50 μ g) from HeLa and HEK293T cells prepared using NETN lysis buffer. *Antibody:* Affinity purified rabbit anti-Bcl11b antibody A300-384A (lot A300-384A-1) used for WB at 0.066 μ g/ml. *Detection:* Chemiluminescence with an exposure time of 3 minutes.



Detection of human Bcl11b by immunohistochemistry. *Sample:* FFPE section of human stomach carcinoma. *Antibody:* Affinity purified rabbit anti-Bcl11b (Cat. No. A300-384A) used at a dilution of 1:1,000 (1 μ g/ml). *Detection:* DAB



Detection of human Bcl11b by western blot and immunoprecipitation. *Samples:* Nuclear extract (5 and 50 μ g for WB, 1 mg for IP) from Jurkat cells. *Antibodies:* Affinity purified rabbit anti-Bcl11b antibody BL1800 (Cat. No. A300-384A) used at 0.1 μ g/ml (A) and 0.5 μ g/ml (B) for WB and at 1 and 10 μ g/mg lysate for IP (B). Bcl11b was also immunoprecipitated using affinity purified rabbit anti-Bcl11b antibodies BL1798 (Cat. No. A300-383A) and BL1801 (Cat. No. A300-385A) at 1 and 10 μ g/mg lysate. Normal rabbit IgG was used as a control for immunoprecipitation reactions. *Detection:* Chemiluminescence with exposure times of 1 minute (A), 1 second (B) or 30 seconds (B).