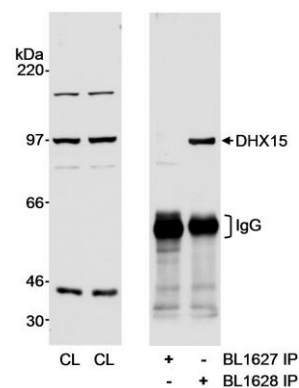


Detection of human DHX15 by western blot. *Samples:* Whole cell lysate (50 μ g) from HeLa and HEK293T cells prepared using NETN lysis buffer. *Antibody:* Affinity purified rabbit anti-DHX15 antibody A300-390A (lot A300-390A-1) used for WB at 0.066 μ g/ml. *Detection:* Chemiluminescence with an exposure time of 3 minutes.



Detection of human DHX15 by western blot and immunoprecipitation. *Samples:* Whole cell lysate (CL; 60 μ g for WB, 1 mg for IP) from HEK293T cells. *Antibodies:* Affinity purified rabbit anti-DHX15 antibody BL1628 (Cat. No. A300-390A) used at 0.1 μ g/ml for WB and at 1 μ g/mg lysate for IP. immunoprecipitatesd DHX15 was blotted using affinity purified rabbit anti-DHX15 antibody BL1627 (Cat. No. A300-389A) at 0.1 μ g/ml. BL1627 was also used unsuccessfully for IP (1 μ g/mg lysate). *Detection:* Chemiluminescence with an exposure time of 15 seconds.