

# SMG1 Antibody

Rabbit Polyclonal

Antigen Affinity Purified

Protein ID NP\_055907.3

Catalog No. A300-394A-T

GeneID 23049

Lot No. A300-394A-T-3

---

<b>APPLICATIONS</b>	WB, IP
<b>SPECIES REACTIVITY</b>	Human
<b>PRESUMED REACTIVITY</b>	Based on 100% sequence identity, this antibody is predicted to react with Mouse
<b>AMOUNT</b>	10 µl
<b>CONCENTRATION</b>	1000 µg/ml
<b>STORAGE/SHELF LIFE</b>	2 – 8°C / 1 year from date of receipt
<b>PHYSICAL STATE</b>	Liquid
<b>BUFFER</b>	Tris-citrate/phosphate buffer, pH 7 to 8 containing 0.09% Sodium Azide
<b>ISOTYPE</b>	IgG
<b>ORIGIN</b>	USA

**PRODUCTION PROCEDURES** Antibody was affinity purified using an epitope specific to SMG1 immobilized on solid support.

The epitope recognized by A300-394A-T maps to a region between residues 2925 and 2975 of human PI-3-Kinase-related kinase SMG1 using the numbering given in entry NP\_055907.3 (GeneID 23049).

Immunoglobulin concentration was determined by extinction coefficient: absorbance at 280 nm of 1.4 equals 1.0 mg of IgG.

**APPLICATIONS** Centrifuge tube to remove product from lid. Optimal working dilutions should be determined experimentally by the investigator. Prepare working dilution immediately before use.

Western Blot 1:1000.– 1:5,000

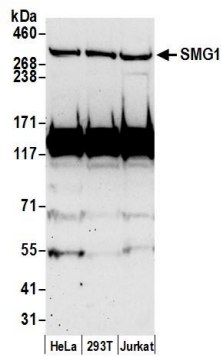
Immunoprecipitation 2 – 10 µg/mg lysate

**IHC HUMAN CONTROLS** Breast Carcinoma, Ovarian Carcinoma

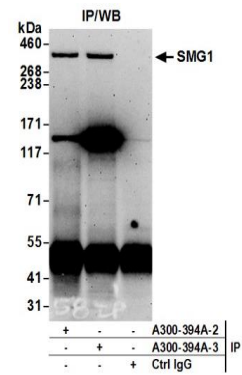
**ADDITIONAL INFO** <https://www.bethyl.com/product/A300-394A-T>

Use the link above to view SDS, a current list of citations, and other product specific information. IP-western blot protocol: [https://www.bethyl.com/content/protocol\\_IP\\_WB](https://www.bethyl.com/content/protocol_IP_WB)

This document certifies that this product has met all of the quality control standards defined by Bethyl Laboratories, Inc.  
Michael Spencer, PhD Date: June 6, 2022



**Detection of human SMG1 by western blot.** *Samples:* Whole cell lysate (50  $\mu$ g) from HeLa, HEK293T, and Jurkat cells prepared using NETN lysis buffer. *Antibody:* Affinity purified rabbit anti-SMG1 antibody A300-394A (lot A300-394A-3) used for WB at 0.4  $\mu$ g/ml. *Detection:* Chemiluminescence with an exposure time of 75 seconds.



**Detection of human SMG1 by western blot of immunoprecipitates.** *Samples:* Whole cell lysate (1.0 mg per IP reaction; 20% of IP loaded) from HeLa cells prepared using NETN lysis buffer. *Antibodies:* Affinity purified rabbit anti-SMG1 antibody A300-394A (lot A300-394A-3) used for IP at 6  $\mu$ g per reaction. SMG1 was also immunoprecipitated by a previous lot of this antibody (lot A300-394A-2). For blotting immunoprecipitated SMG1, A300-394A was used at 1  $\mu$ g/ml. *Detection:* Chemiluminescence with an exposure time of 3 minutes.