

# TBLR1 Antibody

Rabbit Polyclonal

Antigen Affinity Purified

Protein ID Q9BZK7

Catalog No. A300-408A

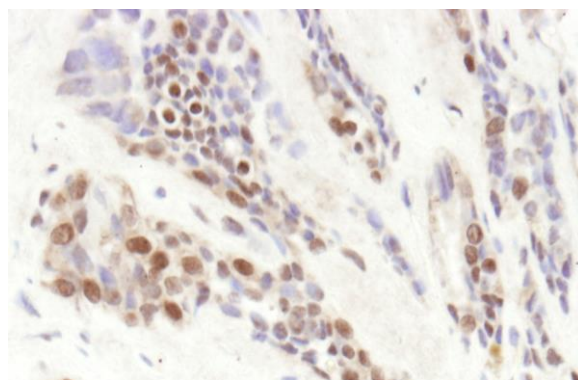
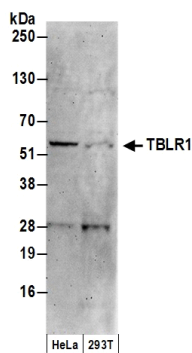
Gene ID 79718

Lot No. A300-408A-1



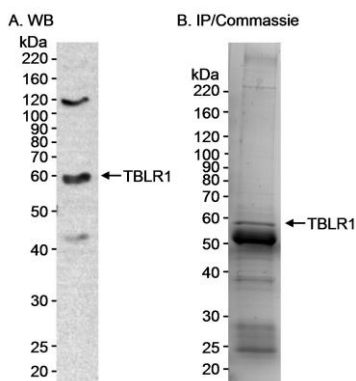
<b>APPLICATIONS</b>	WB, IP, IHC-P, IF								
<b>REACTIVITY TESTED</b>	Human								
<b>PRESUMED REACTIVITY</b>	Based on 100% sequence identity, this antibody is predicted to react with Orangutan, Rhesus Monkey, Gorilla, Chimpanzee, Crab-eating macaque and Northern white-cheeked gibbon.								
<b>ISOTYPE</b>	IgG								
<b>AMOUNT</b>	100 µl at 1 mg/ml								
<b>STORAGE/SHELF LIFE</b>	2 - 8° C / 1 year from date of receipt								
<b>PHYSICAL STATE</b>	Liquid								
<b>BUFFER</b>	Tris-citrate/phosphate buffer, pH 7 to 8 containing 0.09% Sodium Azide								
<b>ORIGIN</b>	USA								
<b>PRODUCTION PROCEDURES</b>	<p>Antibody was affinity purified using an epitope specific to TBLR1 immobilized on solid support.</p> <p>The epitope recognized by A300-408A maps to a region between residues 100 and 150 of human TBL1-related Protein 1 using the numbering given in SwissProt entry Q9BZK7 (GeneID 79718).</p> <p>Immunoglobulin concentration was determined by extinction coefficient: absorbance at 280 nm of 1.4 equals 1.0 mg of IgG.</p>								
<b>APPLICATIONS</b>	<p>Centrifuge tube to remove product from lid. Optimal working dilutions should be determined experimentally by the investigator. Prepare working dilution immediately before use.</p> <table><tr><td>Western Blot</td><td>1:5,000 - 1:15,000</td></tr><tr><td>Immunoprecipitation</td><td>1 to 4 µg/mg lysate</td></tr><tr><td>Immunohistochemistry</td><td>1:1,000 to 1:5,000. Epitope retrieval with citrate buffer pH6.0 is recommended for FFPE tissue sections.</td></tr><tr><td>Immunofluorescence</td><td>1:500 to 1:2,500.</td></tr></table>	Western Blot	1:5,000 - 1:15,000	Immunoprecipitation	1 to 4 µg/mg lysate	Immunohistochemistry	1:1,000 to 1:5,000. Epitope retrieval with citrate buffer pH6.0 is recommended for FFPE tissue sections.	Immunofluorescence	1:500 to 1:2,500.
Western Blot	1:5,000 - 1:15,000								
Immunoprecipitation	1 to 4 µg/mg lysate								
Immunohistochemistry	1:1,000 to 1:5,000. Epitope retrieval with citrate buffer pH6.0 is recommended for FFPE tissue sections.								
Immunofluorescence	1:500 to 1:2,500.								
<b>APPLICATION NOTES</b>	IHC validation was performed using Immunohistochemistry Accessory Kit (Cat. # IHC-101).								
<b>IHC HUMAN CONTROLS</b>	Breast Carcinoma, Colon Carcinoma, Non-Small Cell Lung Cancer, Prostate Carcinoma, Stomach Adenocarcinoma								
<b>ADDITIONAL INFO</b>	<p><a href="http://www.bethyl.com/product/A300-408A">http://www.bethyl.com/product/A300-408A</a></p> <p>Use the link above to view SDS, a current list of citations, and other product specific information.</p>								

## TBLR1 Antibody: A300-408A



**Detection of Human TBLR1 by Western Blot.** *Samples:* Whole cell lysate (50  $\mu$ g) from HeLa and 293T cells prepared using NETN lysis buffer. *Antibody:* Affinity purified rabbit anti-TBLR1 antibody A300-408A (lot A300-408A-1) used for WB at 0.066  $\mu$ g/ml. *Detection:* Chemiluminescence with an exposure time of 3 minutes.

**Detection of Human TBLR1 by Immunohistochemistry.** *Sample:* FFPE section of human prostate carcinoma. *Antibody:* Affinity purified rabbit anti-TBLR1 (Cat. No. A300-408A Lot1) used at a dilution of 1:1,000 (1  $\mu$ g/ml). *Detection:* DAB



**Detection of Human TBLR1 by Western Blot and Immunoprecipitation.** *Samples:* Nuclear extract (25  $\mu$ g for WB in A; 5 mg for IP in B) from HeLa cells. *Antibody:* Affinity purified rabbit anti-TBLR1 antibody (Cat. No. A300-408A) used at 0.1  $\mu$ g/ml for WB (A) and at 4  $\mu$ g/5 mg lysate for IP (B). *Detection:* Chemiluminescence with an exposure time of 1 minute in A. Coomassie stain in B. The identity of the band that is TBLR1 was verified by mass spectrometry.