

DBC1/p30 DBC Antibody

Rabbit Polyclonal

Antigen Affinity Purified

Catalog No. A300-433A

Lot No. A300-433A-1

Protein ID Q6P0Q9

Gene ID 57805



APPLICATIONS WB, IP, IHC-P, IF

REACTIVITY TESTED Human

PRESUMED REACTIVITY Based on 100% sequence identity, this antibody is predicted to react with Rat, Dog, Horse, Rabbit, Guinea pig_10141, Pig, Panda, Orangutan, Rhesus Monkey, Gorilla, Chimpanzee, White-tufted-ear marmoset, Crab-eating macaque, African elephant, Chinese hamster and Northern white-cheeked gibbon.

ISOTYPE IgG

AMOUNT 0.1 ml at 1 mg/ml

STORAGE/SHELF LIFE 2 - 8° C / 1 year from date of receipt

PHYSICAL STATE Liquid

BUFFER Tris-citrate/phosphate buffer, pH 7 to 8 containing 0.09% Sodium Azide

ORIGIN USA

PRODUCTION PROCEDURES Antibody was affinity purified using an epitope specific to DBC1 immobilized on solid support.

The epitope recognized by A300-433A maps to a region between residues 650 and 700 of human Deleted in Breast Cancer 1 using the numbering given in TrEMBL entry Q6P0Q9 (GeneID 57805).

Immunoglobulin concentration was determined by extinction coefficient: absorbance at 280 nm of 1.4 equals 1.0 mg of IgG.

APPLICATIONS Centrifuge tube to remove product from lid. Optimal working dilutions should be determined experimentally by the investigator. Prepare working dilution immediately before use.

Western Blot 1:1,000 - 1:10,000

Immunoprecipitation 1 to 10 µg/mg lysate

Immunohistochemistry 1:500 to 1:5,000. Epitope retrieval with citrate buffer pH6.0 is recommended for FFPE tissue sections.

Immunofluorescence 1:50 to 1:500

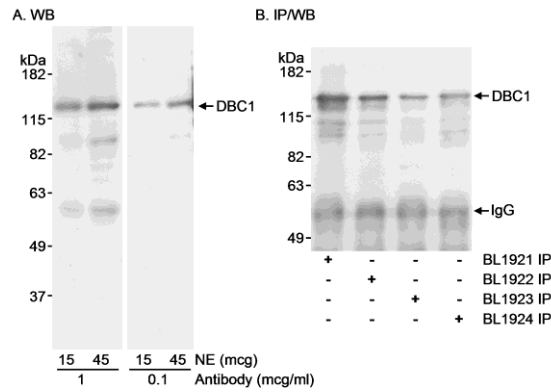
APPLICATION NOTES IHC validation was performed using Immunohistochemistry Accessory Kit (Cat. # IHC-101).

IHC HUMAN CONTROLS Breast Carcinoma, Colon Carcinoma, Metastatic Lymph Node, Ovarian Carcinoma, Pancreatic Islet Cell Tumor, Testicular Seminoma

ADDITIONAL INFO <http://www.bethyl.com/product/A300-433A>

Use the link above to view SDS, a current list of citations, and other product specific information.

DBC1/p30 DBC Antibody: A300-433A



Detection of Human DBC1 by Western Blot and Immunoprecipitation. *Samples:* Nuclear extract (NE; 15 and 45 μ g for WB; 100 μ g for IP) from HeLa cells. *Antibodies:* Affinity purified rabbit anti-DBC1 antibody BL1923 (Cat. No. A300-433A) used at 1 and 0.1 μ g/ml for WB (A) and at 1 μ g/100 μ g NE for IP (B). Immunoprecipitation of DBC1 was also performed with rabbit anti-DBC1 antibodies BL1921 (Cat. No. A300-432A), BL1922 and BL1924 (Cat. No. A300-434A). Immunoprecipitated DBC1 was blotted using BL1923 at 1 μ g/ml. *Detection:* Chemiluminescence with exposure times of 5 seconds (A) and 3 seconds (B).