

MSH2 Antibody

Rabbit Polyclonal

Antigen Affinity Purified

Protein ID P43246

Catalog No. A300-452A-M

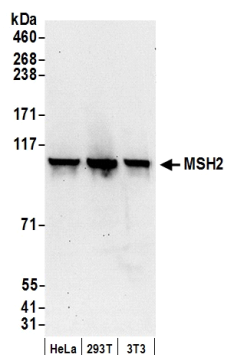
Gene ID 4436

Lot No. A300-452A-M-1



APPLICATIONS	WB, IP, IHC-P, IF
REACTIVITY TESTED	Human, Mouse
PRESUMED REACTIVITY	Based on 100% sequence identity, this antibody is predicted to react with Guinea pig_10141, Pig, Panda, Orangutan, Rhesus Monkey, Gorilla, White-tufted-ear marmoset, Green monkey, Crab-eating macaque, European domestic ferret, Naked mole rat and Northern white-cheeked gibbon.
ISOTYPE	IgG
AMOUNT	100 µl (10 blots)
STORAGE/SHELF LIFE	2 - 8° C / 1 year from date of receipt
PHYSICAL STATE	Liquid
BUFFER	Tris-buffered Saline with 0.1% BSA containing 0.09% Sodium Azide
ORIGIN	USA
PRODUCTION PROCEDURES	Antibody was affinity purified using an epitope specific to MSH2 immobilized on solid support. The epitope recognized by A300-452A-M maps to a region between residue 875 and the C-terminus (residue 934) of human mutS homolog 2 using the numbering given in Swiss-Prot entry P43246 (GeneID 4436).
APPLICATIONS	Centrifuge tube to remove product from lid. Optimal working dilutions should be determined experimentally by the investigator. Prepare working dilution immediately before use. Western Blot 1:1000 Immunoprecipitation The antibody contained within A300-452A-M has been qualified for use in immunoprecipitation; however, we recommend using the alternative formulation of this antibody found as product A300-452A. Immunohistochemistry The antibody contained within A300-452A-M has been qualified for use in immunohistochemistry; however, we recommend using the alternative formulation of this antibody found as product A300-452A. Immunofluorescence The antibody contained within A300-452A-M has been qualified for use in immunofluorescence; however, we recommend using the alternative formulation of this antibody found as product A300-452A.
ADDITIONAL INFO	http://www.bethyl.com/product/A300-452A-M Use the link above to view SDS, a current list of citations, and other product specific information.

MSH2 Antibody: A300-452A-M



Detection of Human and Mouse MSH2 by Western Blot.

Samples: Whole cell lysate (50 μ g) from HeLa, 293T, and mouse NIH3T3 cells prepared using NETN lysis buffer. *Antibody:* Affinity purified rabbit anti-MSH2 antibody A300-452A (lot A300-452A-2) used for WB at 1:1000. *Detection:* Chemiluminescence with an exposure time of 30 seconds.