

Rictor Antibody

Rabbit Polyclonal

Antigen Affinity Purified

Protein ID Q6R327

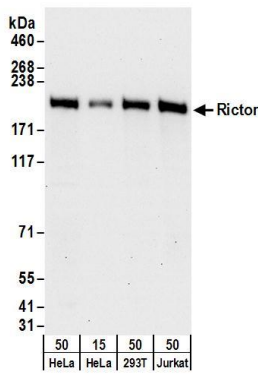
Catalog No. A300-459A

GeneID 253260

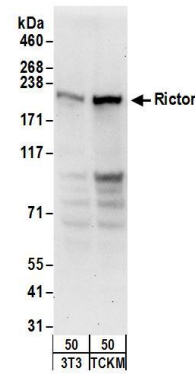
Lot No. A300-459A-3



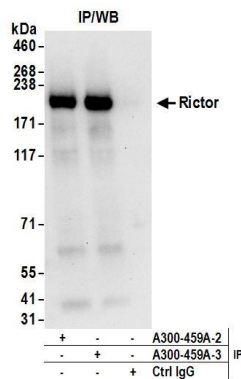
APPLICATIONS	WB, IP, IHC
SPECIES REACTIVITY	Human, Mouse
ISOTYPE	IgG
AMOUNT	100 µl at 1 mg/ml
STORAGE/SHELF LIFE	2 - 8° C / 1 year from date of receipt
PHYSICAL STATE	Liquid
BUFFER	Tris-citrate/phosphate buffer, pH 7 to 8 containing 0.09% Sodium Azide
ORIGIN	USA
PRODUCTION PROCEDURES	<p>Antibody was affinity purified using an epitope specific to Rictor immobilized on solid support.</p> <p>The epitope recognized by A300-459A maps to a region between residue 1650 and the C-terminus (residue 1708) of human Rapamycin-Insensitive Companion of mTOR using the numbering given in TrEMBL entry Q6R327 (GeneID 253260).</p> <p>Immunoglobulin concentration was determined by extinction coefficient: absorbance at 280 nm of 1.4 equals 1.0 mg of IgG.</p>
APPLICATIONS	<p>Centrifuge tube to remove product from lid. Optimal working dilutions should be determined experimentally by the investigator. Prepare working dilution immediately before use.</p> <p>Western Blot 1:2,000 - 1:10,000</p> <p>Immunoprecipitation 2 - 10 µg/mg lysate</p> <p>Immunohistochemistry 1:100 - 1:500. Epitope retrieval with Tris-EDTA pH 9.0 is recommended for FFPE tissue sections.</p>
APPLICATION NOTES	<p>Western blot of immunoprecipitates performed using ReliaBLOT® Reagents (Cat. No. WB120) and 4-8% SDS-PAGE.</p> <p>Western blot of lysates performed using standard western blot reagents and 4-8% SDS-PAGE.</p>
IHC HUMAN CONTROLS	Colon Carcinoma, Lung Adenocarcinoma, Prostate Carcinoma
ADDITIONAL INFO	<p>http://www.bethyl.com/product/A300-459A</p> <p>Use the link above to view SDS, a current list of citations, and other product specific information.</p>



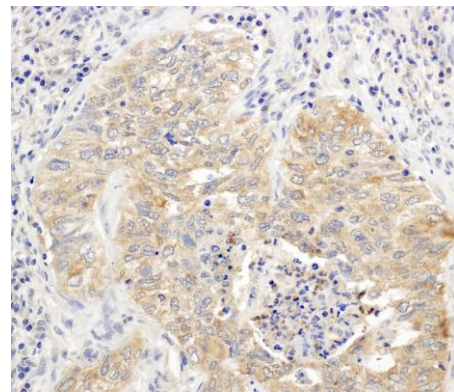
Detection of human Rictor by western blot. *Samples:* Whole cell lysate from HeLa (15 and 50 µg), 293T (50µg), and Jurkat (50µg) cells. *Antibodies:* Affinity purified rabbit anti-Rictor antibody A300-459A (lot A300-459A-3) used for WB at 0.1 µg/ml. *Detection:* Chemiluminescence with an exposure time of 30 seconds.



Detection of mouse Rictor by western blot. *Samples:* Whole cell lysate from NIH3T3 (50µg) and TCKM (50µg) cells. *Antibodies:* Affinity purified rabbit anti-Rictor antibody A300-459A (lot A300-459A-3) used for WB at 0.1 µg/ml. *Detection:* Chemiluminescence with an exposure time of 30 seconds.



Detection of human Rictor by western blot of immunoprecipitates. *Samples:* Whole cell lysate (1 mg for IP; 20% of IP loaded) from HeLa cells. *Antibodies:* Affinity purified rabbit anti-Rictor antibody A300-459A (lot A300-459A-3) used for IP at 6 µg/mg lysate. Rictor was also immunoprecipitated by a previous lot (A300-459A-2) of this antibody. For blotting immunoprecipitated Rictor, A300-459A was used at 1 µg/ml. *Detection:* Chemiluminescence with an exposure time of 10 seconds.



Detection of human Rictor by immunohistochemistry. *Sample:* FFPE section of human lung carcinoma. *Antibody:* Affinity purified rabbit anti-Rictor (Cat. No. A300-459A Lot3) used at a dilution of 1:1,000 (1 µg/ml). *Detection:* DAB