

DDB1 Antibody

Rabbit Polyclonal

Antigen Affinity Purified

Protein ID Q13289

Catalog No. A300-462A

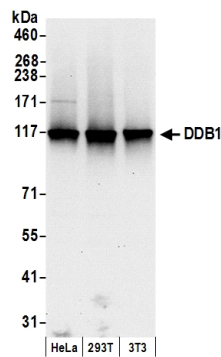
Gene ID 1642

Lot No. A300-462A-2

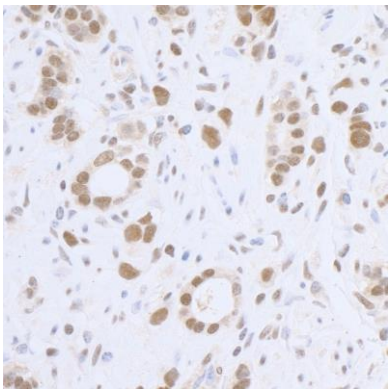


APPLICATIONS	WB, IP, IHC-P, IF, PLA
REACTIVITY TESTED	Human, Mouse
PRESUMED REACTIVITY	Based on 100% sequence identity, this antibody is predicted to react with Rat, X. laevis, X. tropicalis, Bovine, Dog, Horse, Rabbit, Guinea pig_10141, Pig, Panda, Orangutan, Rhesus Monkey, Gorilla, Chimpanzee, Tasmanian devil, White-tufted-ear marmoset, Green monkey and Northern white-cheeked gibbon.
ISOTYPE	IgG
AMOUNT	100 µl at 0.2 mg/ml
STORAGE/SHELF LIFE	2 - 8° C / 1 year from date of receipt
PHYSICAL STATE	Liquid
BUFFER	Tris-buffered Saline with 0.1% BSA containing 0.09% Sodium Azide
ORIGIN	USA
PRODUCTION PROCEDURES	Antibody was affinity purified using an epitope specific to DDB1 immobilized on solid support. The epitope recognized by A300-462A maps to a region between residue 1100 and the C-terminus (residue 1140) of human damage-specific DNA binding protein 1 using the numbering given in TrEMBL entry Q13289 (GeneID 1642). Immunoglobulin concentration was determined by extinction coefficient: absorbance at 280 nm of 1.4 equals 1.0 mg of IgG.
APPLICATIONS	Centrifuge tube to remove product from lid. Optimal working dilutions should be determined experimentally by the investigator. Prepare working dilution immediately before use. Western Blot 1:2,000 - 1:10,000 Immunoprecipitation 2 to 10 µg/mg lysate Immunohistochemistry 1:500 to 1:2,000. Epitope retrieval with citrate buffer pH6.0 is recommended for FFPE tissue sections. Immunofluorescence 1:250 to 1:2,000 Proximity Ligation Assay 1:200 - 1:4,000
APPLICATION NOTES	Validation by IP/Western Blot was performed using a 4-20% SDS-PAGE gel and ReliaBLOT® Reagents (Cat. No. WB120). IHC validation was performed using Immunohistochemistry Accessory Kit (Cat. # IHC-101).
IHC HUMAN CONTROLS	Breast Carcinoma, Colon Carcinoma, Metastatic Lymph Node, Ovarian Carcinoma, Skin Basal Cell Carcinoma, Testicular Seminoma
IHC MOUSE CONTROLS	Renal Cell Carcinoma, Squamous Cell Carcinoma
ADDITIONAL INFO	http://www.bethyl.com/product/A300-462A Use the link above to view SDS, a current list of citations, and other product specific information.

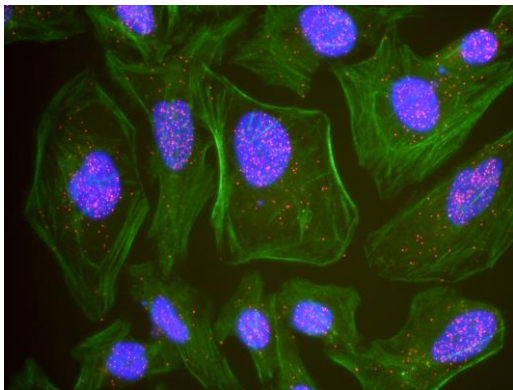
DDB1 Antibody: A300-462A



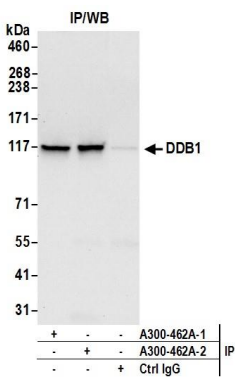
Detection of Human and Mouse DDB1 by Western Blot.
Samples: Whole cell lysate (15 µg) from HeLa, 293T, and mouse NIH3T3 cells prepared using NETN lysis buffer. *Antibody:* Affinity purified rabbit anti-DDB1 antibody A300-462A (lot A300-462A-2) used for WB at 0.1 µg/ml. *Detection:* Chemiluminescence with an exposure time of 10 seconds.



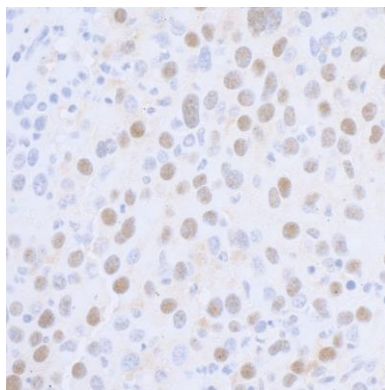
Detection of Human DDB1 by Immunohistochemistry.
Sample: FFPE section of human ovarian carcinoma. *Antibody:* Affinity purified rabbit anti-DDB1 (Cat. No. A300-462A Lot2) used at a dilution of 1:1,000 (0.2µg/ml). *Detection:* DAB



This antibody is qualified for the Proximity Ligation Assay (PLA). PLA uses paired antibodies, so please refer to the PLA page of our website for specific imaging obtained by pairing this antibody with other qualified antibodies. The above image shows representative results for PLA using three color fluorescence, including DAPI stained nuclei (blue), phalloidin stained cytoplasmic F-actin (green), and PLA positive signal (red).



Detection of Human DDB1 by Western Blot of Immunoprecipitates. *Samples:* Whole cell lysate (0.5 or 1.0 mg per IP reaction; 20% of IP loaded) from HeLa cells prepared using NETN lysis buffer. *Antibodies:* Affinity purified rabbit anti-DDB1 antibody A300-462A (lot A300-462A-2) used for IP at 6 µg per reaction. DDB1 was also immunoprecipitated by a previous lot of this antibody A300-462A-1. For blotting immunoprecipitated DDB1, A300-462A was used at 0.4 µg/ml. *Detection:* Chemiluminescence with an exposure time of 10 seconds.



Detection of Mouse DDB1 by Immunohistochemistry. *Sample:* FFPE section of mouse renal cell carcinoma. *Antibody:* Affinity purified rabbit anti-DDB1 (Cat. No. A300-462A Lot2) used at a dilution of 1:1,000 (0.2µg/ml). *Detection:* DAB