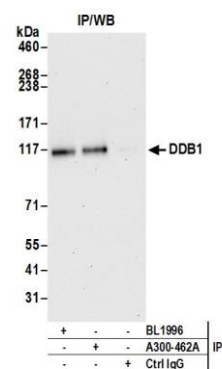


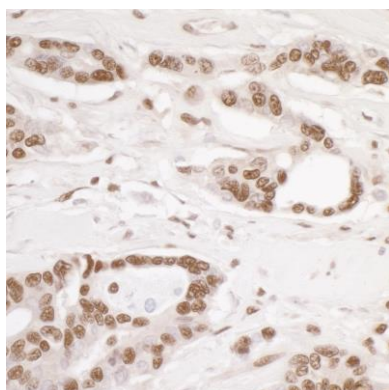
Detection of human and mouse DDB1 by western blot.

Samples: Whole cell lysate (15 µg) from HeLa, HEK293T, Jurkat, and mouse TCMK-1 cells prepared using NETN lysis buffer. **Antibody:** Affinity purified rabbit anti-DDB1 antibody A300-462A (lot A300-462A-3) used for WB at 0.1 µg/ml. **Detection:** Chemiluminescence with an exposure time of 10 seconds.



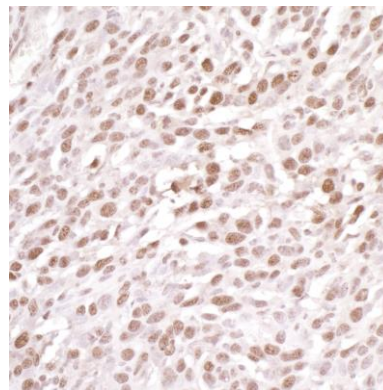
Detection of human DDB1 by western blot of immunoprecipitates.

Samples: Whole cell lysate (1.0 mg per IP reaction; 20% of IP loaded) from HeLa cells prepared using NETN lysis buffer. **Antibodies:** Affinity purified rabbit anti-DDB1 antibody A300-462A (lot A300-462A-3) used for IP at 3 µg per reaction. DDB1 was also immunoprecipitated by rabbit anti-DDB1 antibody BL1996. For blotting immunoprecipitated DDB1, A300-462A was used at 0.4 µg/ml. **Detection:** Chemiluminescence with an exposure time of 30 seconds.



Detection of human DDB1 by immunohistochemistry.

Sample: FFPE section of human ovarian carcinoma. **Antibody:** Affinity purified rabbit anti-DDB1 (Cat. No. A300-462A Lot3) used at a dilution of 1:1,000 (0.2µg/ml). **Detection:** DAB



Detection of mouse DDB1 by immunohistochemistry.

Sample: FFPE section of mouse CT26 colon carcinoma. **Antibody:** Affinity purified rabbit anti-DDB1 (Cat. No. A300-462A Lot3) used at a dilution of 1:1,000 (0.2µg/ml). **Detection:** DAB