

DDB1 Antibody

Rabbit Polyclonal

Antigen Affinity Purified Protein ID Q13289

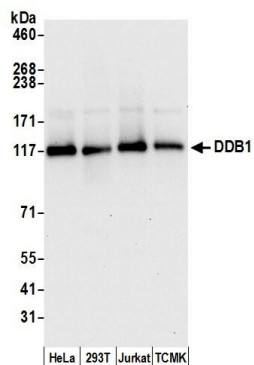
Catalog No. A300-462A-M GeneID 1642

Lot No. A300-462A-M-3



APPLICATIONS	WB, IP, IHC
SPECIES REACTIVITY	Human, Mouse
PRESUMED REACTIVITY	Based on 100% sequence identity, this antibody is predicted to react with Rat, X. laevis, Bovine and Orangutan
AMOUNT	100 µl (10 blots)
CONCENTRATION	100 µg/ml
STORAGE/SHELF LIFE	2 - 8° C / 1 year from date of receipt
PHYSICAL STATE	Liquid
BUFFER	Tris-buffered Saline containing 0.1% BSA and 0.09% Sodium Azide
ISOTYPE	IgG
ORIGIN	USA
PRODUCTION PROCEDURES	Antibody was affinity purified using an epitope specific to DDB1 immobilized on solid support. The epitope recognized by A300-462A-M maps to a region between residue 1100 and the C-terminus (residue 1140) of human damage-specific DNA binding protein 1 using the numbering given in TrEMBL entry Q13289 (GeneID 1642).
APPLICATIONS	Centrifuge tube to remove product from lid. Optimal working dilutions should be determined experimentally by the investigator. Prepare working dilution immediately before use. Western Blot 1:1000 Immunoprecipitation The antibody contained within A300-462A-M has been qualified for use in immunoprecipitation; however, we recommend using the alternative formulation of this antibody found as product A300-462A. Immunohistochemistry 1:250 - 1:1,000. Epitope retrieval with citrate buffer pH 6.0 is recommended for FFPE tissue sections.
APPLICATION NOTES	Western blot of immunoprecipitates performed using Normal Pig Serum (Cat. No. S100-020), Goat anti-Rabbit Light Chain HRP Conjugate (Cat. No. A120-113P) and 4-8% SDS-PAGE (link to IP-western blot protocol in Additional Info section below). Western blot of lysates performed using standard western blot reagents and 4-8% SDS-PAGE.
ADDITIONAL INFO	https://www.bethyl.com/product/A300-462A-M Use the link above to view SDS, a current list of citations, and other product specific information. IP-western blot protocol: https://www.bethyl.com/content/protocol_IP_WB

This document certifies that this product has met all of the quality control standards defined by Bethyl Laboratories, Inc.
Eric McIntush, PhD | Chief Scientific Officer Date: June 21, 2019

**Detection of human and mouse DDB1 by western blot.**

Samples: Whole cell lysate (15 µg) from HeLa, HEK293T, Jurkat, and mouse TCMK-1 cells prepared using NETN lysis buffer. *Antibody:* Affinity purified rabbit anti-DDB1 antibody A300-462A-M (lot A300-462A-M-3) used for WB at 1:1000. *Detection:* Chemiluminescence with an exposure time of 10 seconds.